

GS28 antibody

Catalog Number: 111164

Product name

GS28 antibody

Immunogen

[Human GS28 Recombinant protein \(GST tag\)](#)

Specificity

Human, Mouse, Rat; other species not tested.

Antibody description

GS28 Rabbit Polyclonal antibody. Positive IHC detected in human stomach cancer tissue. Positive IF detected in HeLa cells. Positive FC detected in HeLa cells. Positive WB detected in human liver tissue, HepG2 cells, NIH/3T3 cells, rat liver tissue. Observed molecular weight by Western-blot: 28 kDa

Preparation

This antibody was obtained by immunization of GS28 recombinant protein (Accession Number: BC012620). Purification method: Antigen affinity purified.

Formulation

PBS with 0.02% sodium azide and 50% glycerol pH 7.3.

Storage

Store at -20°C. DO NOT ALIQUOT

Clonality

Polyclonal

Ig Type

Rabbit IgG

Applications

ELISA, WB, IHC, FC, IF

Dilutions

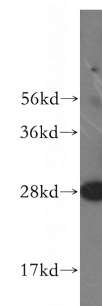
Recommended Dilution:

WB: 1:500-1:5000

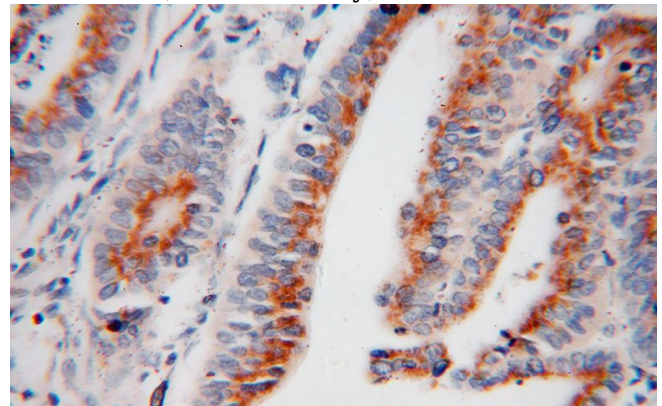
IHC: 1:20-1:200

IF: 1:50-1:500

Validations



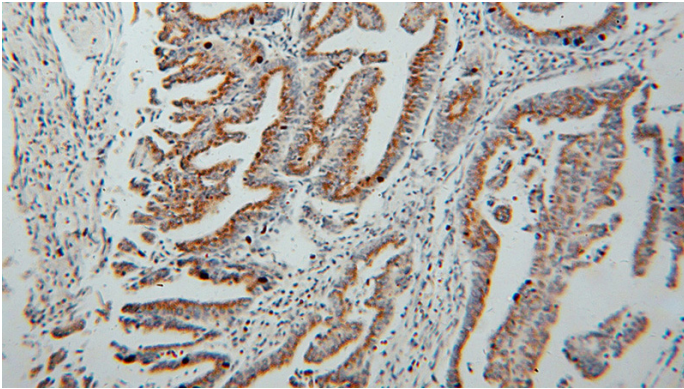
human liver tissue were subjected to SDS PAGE followed by western blot with Catalog No:111164(GS28 antibody) at dilution of 1:500



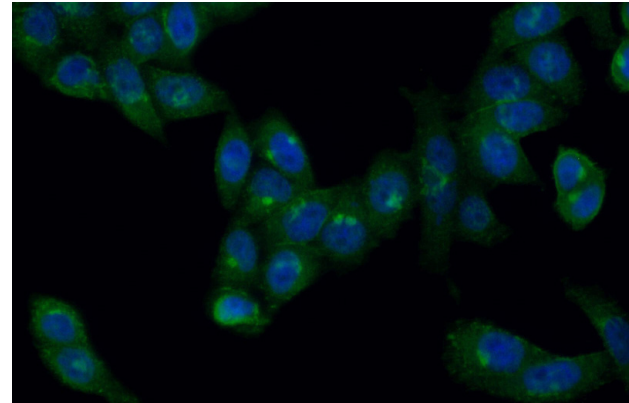
Immunohistochemical of paraffin-embedded human stomach cancer using Catalog No:111164(GS28 antibody) at dilution of 1:50 (under 40x lens)

GS28 antibody

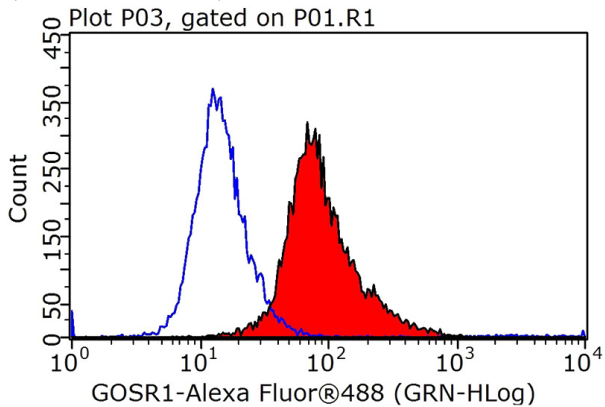
Catalog Number: 111164



1X10⁶ HeLa cells were stained with 0.2ug GS28 antibody (Catalog No:111164, red) and control antibody (blue). Fixed with 90% MeOH blocked with 3% BSA (30 min). Alexa Fluor 488-conjugated AffiniPure Goat Anti-Rabbit IgG(H+L) with dilution 1:1000.



Immunohistochemical of paraffin-embedded human stomach cancer using Catalog No:111164(GS28 antibody) at dilution of 1:50 (under 10x lens)



Immunofluorescent analysis of (10% Formaldehyde) fixed HeLa cells using Catalog No:111164(GS28 Antibody) at dilution of 1:50 and Alexa Fluor 488-conjugated AffiniPure Goat Anti-Rabbit IgG(H+L)