

# GRAP antibody

Catalog Number: 111161

## Product name

GRAP antibody

## Specificity

Human, Mouse, Rat; other species not tested.

## Antibody description

GRAP Rabbit Polyclonal antibody. Positive WB detected in Transfected HEK-293 cells. Positive IHC detected in human lymphoma tissue.

## Preparation

This antibody was obtained by immunization of GRAP recombinant protein (Accession Number: NM\_006613). Purification method: Antigen affinity purified.

## Formulation

PBS with 0.02% sodium azide and 50% glycerol pH 7.3.

## Storage

Store at -20°C. DO NOT ALIQUOT

## Clonality

Polyclonal

## Ig Type

Rabbit IgG

## Applications

ELISA, IHC, WB

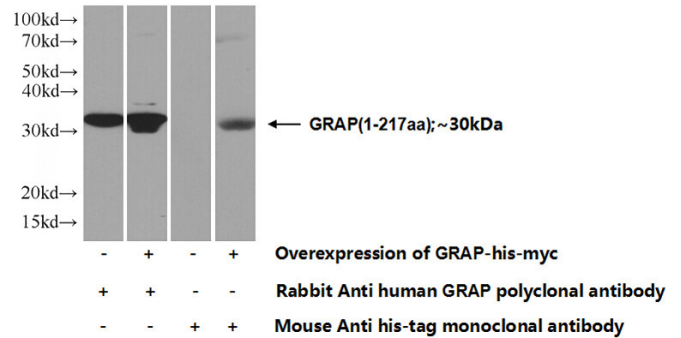
## Dilutions

Recommended Dilution:

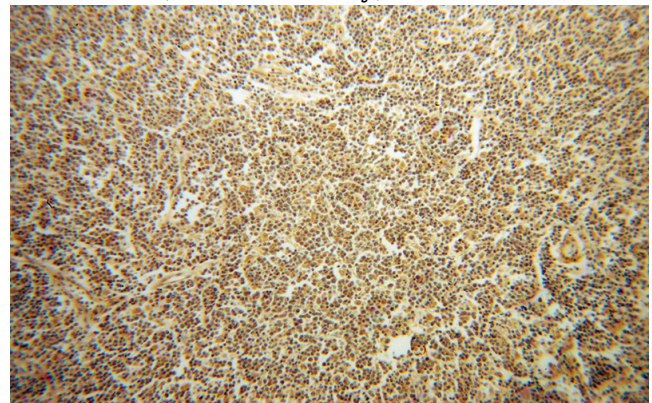
WB: 1:200-1:2000

IHC: 1:20-1:200

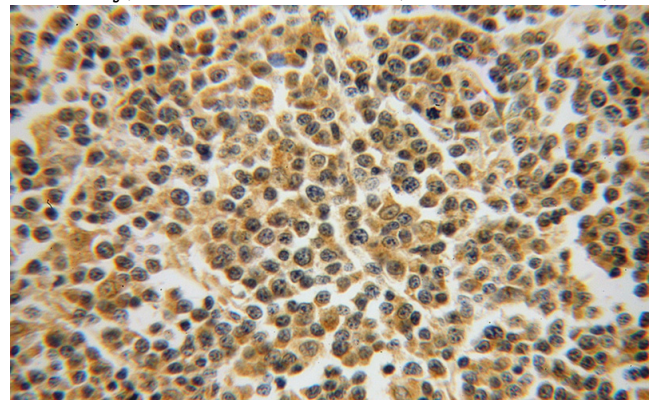
## Validations



Transfected HEK-293 cells were subjected to SDS PAGE followed by western blot with Catalog No:111161 (GRAP Antibody) at dilution of 1:500



Immunohistochemical of paraffin-embedded human lymphoma using Catalog No:111161 (GRAP antibody) at dilution of 1:50 (under 10x lens)



Immunohistochemical of paraffin-embedded human lymphoma using Catalog No:111161 (GRAP antibody) at dilution of 1:50 (under 40x lens)