

GPSM3 antibody



Catalog Number: 111145

Product name

GPSM3 antibody

Specificity

Human; other species not tested.

Antibody description

GPSM3 Rabbit Polyclonal antibody. Positive WB detected in Transfected HEK-293 cells.

Preparation

This antibody was obtained by immunization of GPSM3 recombinant protein (Accession Number: NM_022107). Purification method: Antigen affinity purified.

Formulation

PBS with 0.1% sodium azide and 50% glycerol pH 7.3.

Storage

Store at -20°C. DO NOT ALIQUOT

Clonality

Polyclonal

Ig Type

Rabbit IgG

Applications

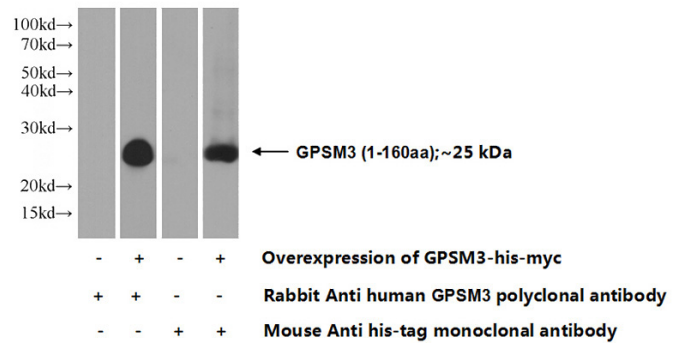
ELISA, WB

Dilutions

Recommended Dilution:

WB: 1:500-1:5000

Validations



Transfected HEK-293 cells were subjected to SDS PAGE followed by western blot with Catalog No:111145(GPSM3 Antibody) at dilution of 1:1000