

# GPRIN3-Specific antibody



Catalog Number: 111142

## Product name

GPRIN3-Specific antibody

## Specificity

Human, Mouse, Rat; other species not tested.

## Antibody description

GPRIN3-Specific Rabbit Polyclonal antibody. Positive IF detected in HepG2 cells. Positive WB detected in human brain tissue, mouse brain tissue. Observed molecular weight by Western-blot: 82 kDa

## Preparation

This antibody was obtained by immunization of Peptide (Accession Number: NM\_198281). Purification method: Antigen affinity purified.

## Formulation

PBS with 0.02% sodium azide and 50% glycerol pH 7.3.

## Storage

Store at -20°C. DO NOT ALIQUOT

## Clonality

Polyclonal

## Ig Type

Rabbit IgG

## Applications

ELISA, WB, IF

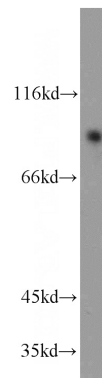
## Dilutions

Recommended Dilution:

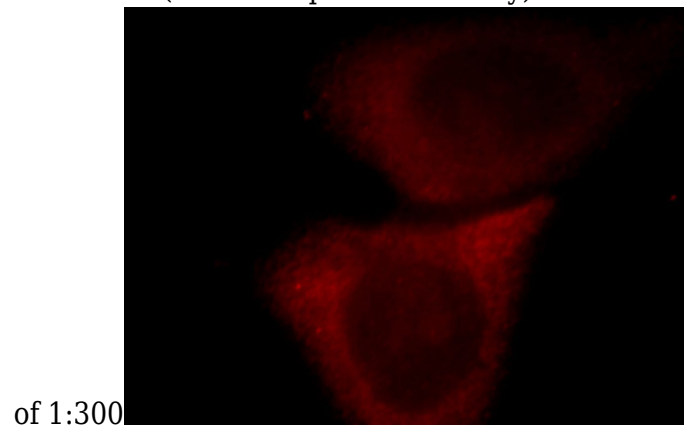
WB: 1:200-1:2000

IF: 1:10-1:100

## Validations



human brain tissue were subjected to SDS PAGE followed by western blot with Catalog No:111142(GPRIN3-Specific antibody) at dilution



of 1:300

Immunofluorescent analysis of HepG2 cells, using GPRIN3 antibody Catalog No:111142 at 1:25 dilution and Rhodamine-labeled goat anti-rabbit IgG (red).