

GPR35 antibody



Catalog Number: 111126

Product name

GPR35 antibody

Specificity

Human; other species not tested.

Antibody description

GPR35 Rabbit Polyclonal antibody. Positive FC detected in A549 cells. Positive WB detected in A549 cells, human brain tissue, human stomach tissue. Observed molecular weight by Western-blot: 30-34 kDa

Preparation

This antibody was obtained by immunization of Peptide (Accession Number: NM_005301). Purification method: Antigen affinity purified.

Formulation

PBS with 0.02% sodium azide and 50% glycerol pH 7.3.

Storage

Store at -20°C. DO NOT ALIQUOT

Clonality

Polyclonal

Ig Type

Rabbit IgG

Applications

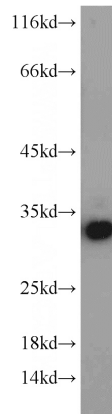
ELISA, WB, FC

Dilutions

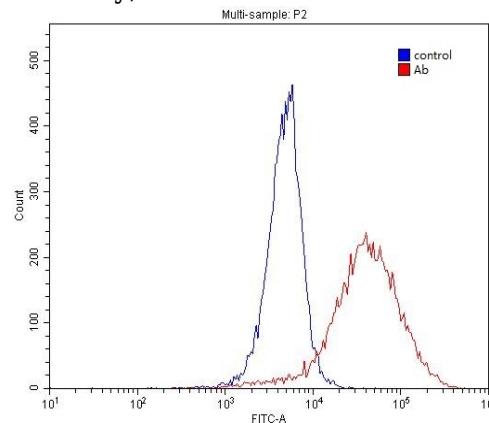
Recommended Dilution:

WB: 1:500-1:5000

Validations



A549 cells were subjected to SDS PAGE followed by western blot with Catalog No:111126(GPR35 antibody) at dilution of 1:600



1X10⁶ A549 cells were stained with 0.2ug GPR35 antibody (Catalog No:111126, red) and control antibody (blue). Fixed with 4% PFA blocked with 3% BSA (30 min). Alexa Fluor 488-conjugated AffiniPure Goat Anti-Rabbit IgG(H+L) with dilution 1:1500.