

# GM-CSF antibody



Catalog Number: 111095

## Product name

GM-CSF antibody

WB: 1:500-1:5000

IHC: 1:20-1:200

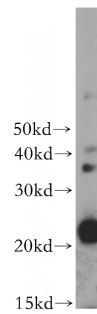
## Specificity

Human, Mouse; other species not tested.

## Validations

## Antibody description

GM-CSF Rabbit Polyclonal antibody. Positive IHC detected in human lung tissue, human kidney tissue, human ovary tissue, human placenta tissue, human spleen tissue. Positive WB detected in RAW 264.7 cells, human liver tissue, K-562 cells. Observed molecular weight by Western-blot: 22 kDa



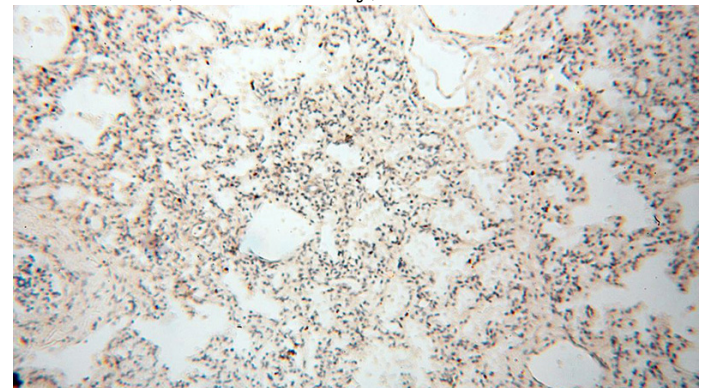
## Preparation

This antibody was obtained by immunization of GM-CSF recombinant protein (Accession Number: NM\_000758). Purification method: Antigen affinity purified.

RAW264.7 cells were subjected to SDS PAGE followed by western blot with Catalog No:111095(CSF2 antibody) at dilution of 1:400

## Formulation

PBS with 0.02% sodium azide and 50% glycerol pH 7.3.



## Storage

Store at -20°C. DO NOT ALIQUOT

## Clonality

Polyclonal

## Ig Type

Rabbit IgG

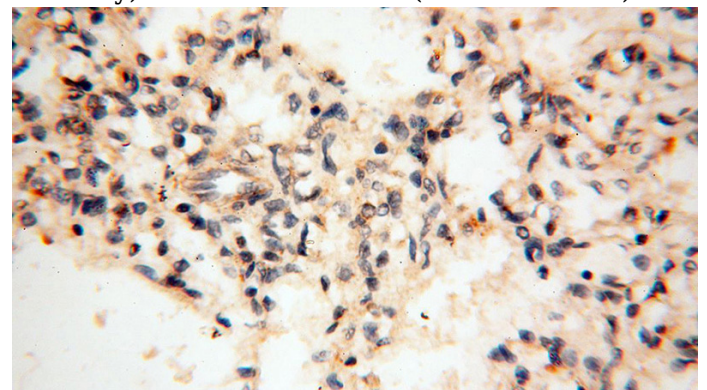
## Applications

ELISA, WB, IHC

## Dilutions

Recommended Dilution:

Immunohistochemical of paraffin-embedded human lung using Catalog No:111095(CSF2 antibody) at dilution of 1:100 (under 10x lens)



Immunohistochemical of paraffin-embedded human lung using Catalog No:111095(CSF2

# GM-CSF antibody



Catalog Number: 111095

---

antibody) at dilution of 1:100 (under 40x lens)