

GM2A antibody

Catalog Number: 111093

Product name

GM2A antibody

IP: 1:200-1:2000

IHC: 1:20-1:200

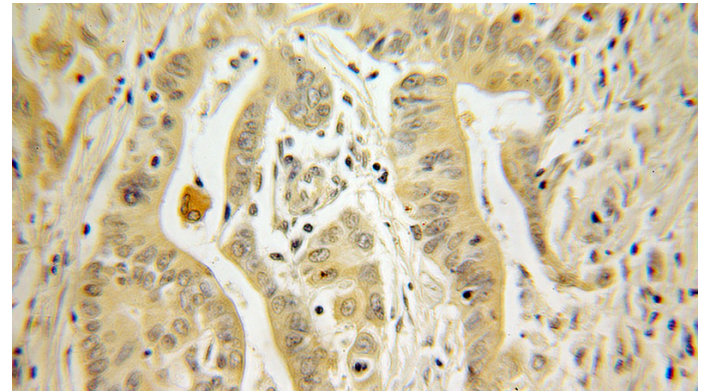
Specificity

Human, Mouse, Rat; other species not tested.

Validations

Antibody description

GM2A Rabbit Polyclonal antibody. Positive IHC detected in human colon cancer tissue. Positive IP detected in HEK-293 cells. Positive WB detected in rat kidney tissue, human placenta tissue, mouse kidney tissue. Observed molecular weight by Western-blot: 22 kDa



Preparation

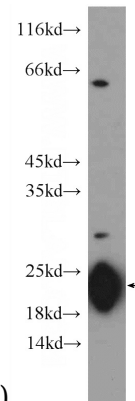
This antibody was obtained by immunization of GM2A recombinant protein (Accession Number: NM_000405). Purification method: Antigen affinity purified.

Immunohistochemical of paraffin-embedded human colon cancer using Catalog

No:111093(GM2A antibody) at dilution of 1:100

Formulation

PBS with 0.1% sodium azide and 50% glycerol pH 7.3.



(under 10x lens)

Storage

Store at -20°C. DO NOT ALIQUOT

rat kidney tissue were subjected to SDS PAGE followed by western blot with Catalog

No:111093(GM2A Antibody) at dilution of 1:300

Clonality

Polyclonal

Ig Type

Rabbit IgG

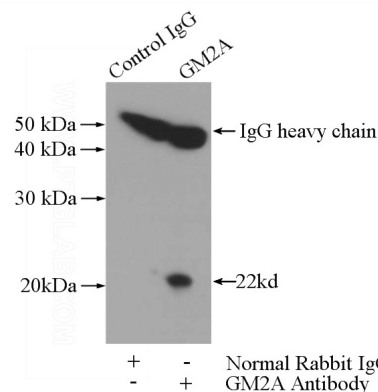
Applications

ELISA, IHC, WB, IP

Dilutions

Recommended Dilution:

WB: 1:200-1:1000



IP Result of anti-GM2A (IP:Catalog No:111093, 3ug; Detection:Catalog No:111093 1:600) with

GM2A antibody



Catalog Number: 111093

HEK-293 cells lysate 2800ug.