

GLUT1 antibody



Catalog Number: 111076

Product name

GLUT1 antibody

WB: 1:200-1:2000

IHC: 1:20-1:200

Specificity

Human, Mouse, Rat; other species not tested.

IF: 1:20-1:200

Antibody description

GLUT1 Rabbit Polyclonal antibody. Positive WB detected in Y79 cells, HEK-293 cells, NIH/3T3 cells, SH-SY5Y cells. Positive IHC detected in human breast cancer tissue, human lung cancer tissue. Positive IF detected in HeLa cells. Positive FC detected in HeLa cells. Observed molecular weight by Western-blot: 45-55kd

Preparation

This antibody was obtained by immunization of GLUT1 recombinant protein (Accession Number: NM_006516). Purification method: Antigen affinity purified.

Formulation

PBS with 0.02% sodium azide and 50% glycerol pH 7.3.

Storage

Store at -20°C. DO NOT ALIQUOT

Clonality

Polyclonal

Ig Type

Rabbit IgG

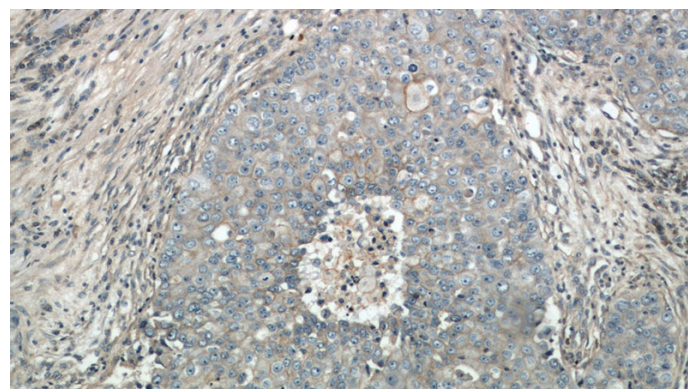
Applications

ELISA, WB, IHC, FC, IF

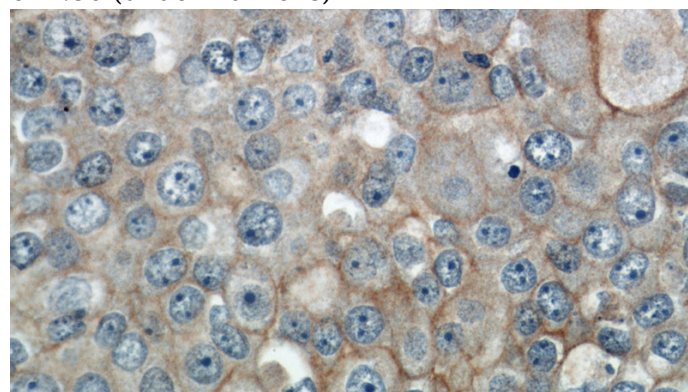
Dilutions

Recommended Dilution:

Validations



Immunohistochemical of paraffin-embedded human breast cancer using Catalog No:111076(SLC2A1, GLUT1 antibody) at dilution of 1:50 (under 10x lens)



Immunohistochemical of paraffin-embedded human breast cancer using Catalog No:111076(SLC2A1, GLUT1 antibody) at dilution

116kd→

66kd→

45kd→

35kd→

25kd→

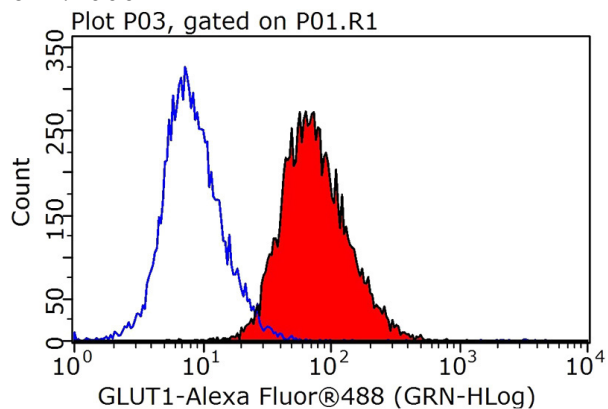
of 1:50 (under 40x lens)

GLUT1 antibody

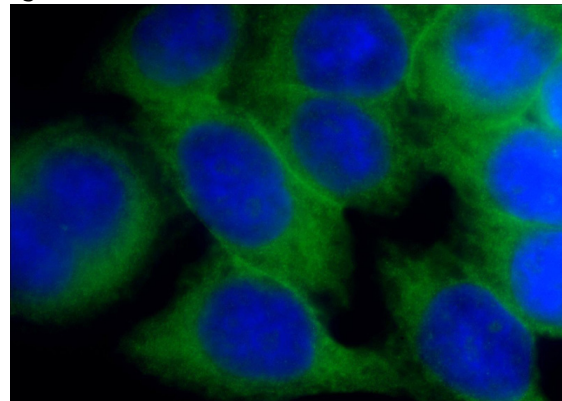
Catalog Number: 111076

Y79 cells were subjected to SDS PAGE followed by western blot with Catalog No:111076(SLC2A1, GLUT1 antibody) at dilution of 1:1000

MeOH blocked with 3% BSA (30 min). Alexa Fluor 488-conjugated AffiniPure Goat Anti-Rabbit IgG(H+L) with dilution 1:1000.



1X10⁶ HeLa cells were stained with 0.2ug SLC2A1, GLUT1 antibody (Catalog No:111076, red) and control antibody (blue). Fixed with 90%



Immunofluorescent analysis of HeLa cells using Catalog No:111076(SLC2A1, GLUT1 Antibody) at dilution of 1:50 and Alexa Fluor 488-conjugated AffiniPure Goat Anti-Rabbit IgG(H+L)