

GP73/GOLPH2 antibody



Catalog Number: 111054

Product name

GP73/GOLPH2 antibody

Specificity

Human; other species not tested.

Antibody description

GP73/GOLPH2 Rabbit Polyclonal antibody. Positive FC detected in HeLa cells. Positive IHC detected in human liver cancer tissue, human heart tissue, human kidney tissue, human lung tissue, human placenta tissue, human skin tissue, human spleen tissue, human testis tissue. Positive IF detected in Hela cells. Positive IP detected in HeLa cells. Positive WB detected in HeLa cells. Observed molecular weight by Western-blot: 73 kDa

Preparation

This antibody was obtained by immunization of GP73/GOLPH2 recombinant protein (Accession Number: NM_016548). Purification method: Antigen affinity purified.

Formulation

PBS with 0.02% sodium azide and 50% glycerol pH 7.3.

Storage

Store at -20°C. DO NOT ALIQUOT

Clonality

Polyclonal

Ig Type

Rabbit IgG

Applications

ELISA, WB, IF, IHC, FC, IP

Dilutions

Recommended Dilution:

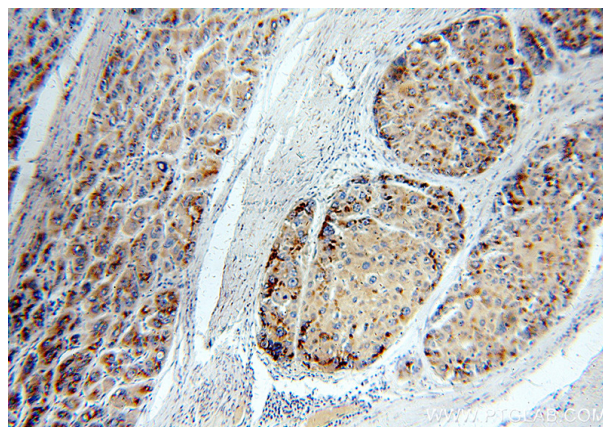
WB: 1:500-1:5000

IP: 1:500-1:5000

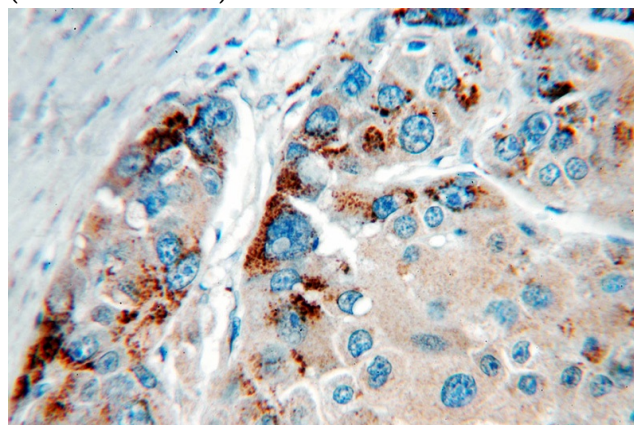
IHC: 1:20-1:200

IF: 1:10-1:100

Validations



Immunohistochemical of paraffin-embedded human liver cancer using Catalog No:111054(GOLM1 antibody) at dilution of 1:100 (under 10x lens)

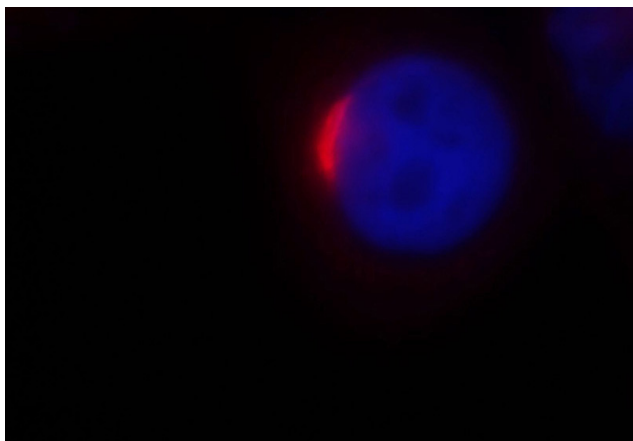


Immunohistochemical of paraffin-embedded human liver cancer using Catalog No:111054(GOLM1 antibody) at dilution of 1:100 (under 40x lens)

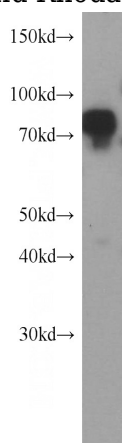
GP73/GOLPH2 antibody



Catalog Number: 111054

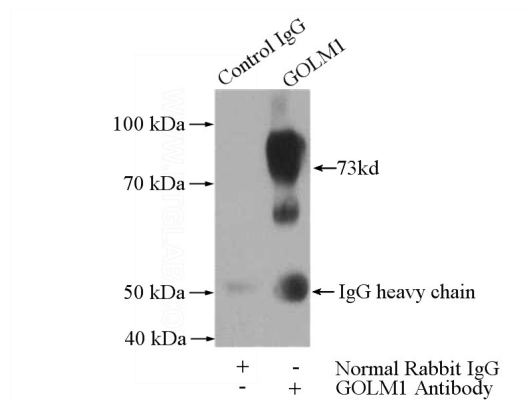


Immunofluorescent analysis of HeLa cells, using GOLM1 antibody Catalog No:111054 at 1:25 dilution and Rhodamine-labeled goat anti-rabbit

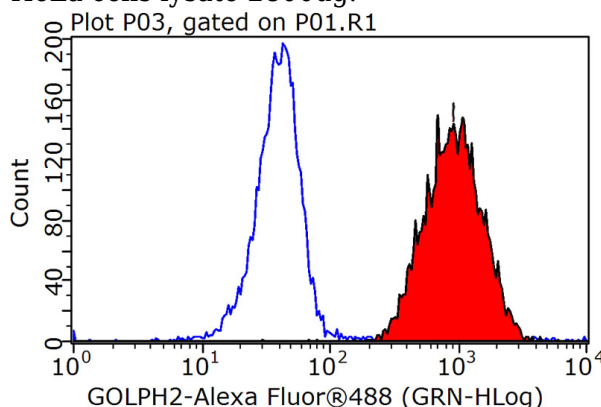


IgG (red).

HeLa cells were subjected to SDS PAGE followed by western blot with Catalog No:111054(GOLM1 antibody) at dilution of 1:1500



IP Result of anti-GOLM1 (IP:Catalog No:111054, 4ug; Detection:Catalog No:111054 1:1000) with HeLa cells lysate 2800ug.



1X10⁶ HeLa cells were stained with 0.2ug GOLM1 antibody (Catalog No:111054, red) and control antibody (blue). Fixed with 90% MeOH blocked with 3% BSA (30 min). Alexa Fluor 488-conjugated AffiniPure Goat Anti-Rabbit IgG(H+L) with dilution 1:1000.