

# GOT1 antibody

Catalog Number: 111050

## Product name

GOT1 antibody

## Specificity

Human, Mouse, Rat; other species not tested.

## Antibody description

GOT1 Rabbit Polyclonal antibody. Positive WB detected in mouse brain tissue, HepG2 cells, human brain tissue, human heart tissue, human skeletal muscle tissue, L02 cells, mouse heart tissue, mouse liver tissue, mouse skeletal muscle tissue, rat brain tissue. Positive IP detected in mouse brain tissue. Observed molecular weight by Western-blot: 43-46 kDa

## Preparation

This antibody was obtained by immunization of GOT1 recombinant protein (Accession Number: NM\_002079). Purification method: Antigen affinity purified.

## Formulation

PBS with 0.02% sodium azide and 50% glycerol pH 7.3.

## Storage

Store at -20°C. DO NOT ALIQUOT

## Clonality

Polyclonal

## Ig Type

Rabbit IgG

## Applications

ELISA, WB, IP

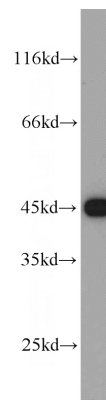
## Dilutions

Recommended Dilution:

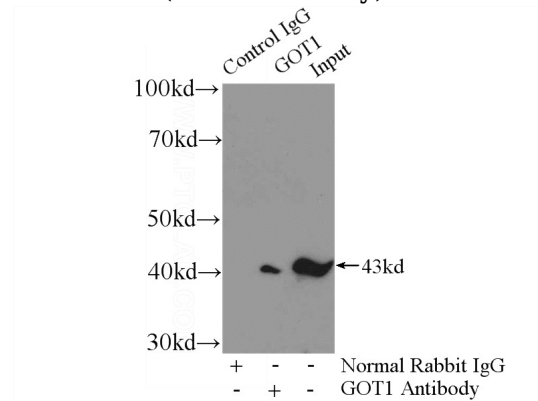
WB: 1:500-1:5000

IP: 1:500-1:5000

## Validations



mouse brain tissue were subjected to SDS PAGE followed by western blot with Catalog No:111050(GOT1 antibody) at dilution of 1:1000



IP Result of anti-GOT1 (IP:Catalog No:111050, 4ug; Detection:Catalog No:111050 1:1000) with mouse brain tissue lysate 4000ug.