

GEMIN5 antibody

Catalog Number: 110939

Product name

GEMIN5 antibody

WB: 1:500-1:5000

IP: 1:500-1:5000

Specificity

Human; other species not tested.

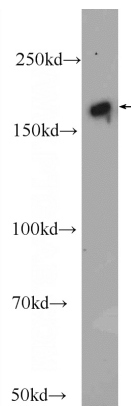
IHC: 1:20-1:200

IF: 1:10-1:100

Antibody description

GEMIN5 Rabbit Polyclonal antibody. Positive IHC detected in human cerebellum tissue, human cervical cancer tissue. Positive IF detected in HeLa cells. Positive IP detected in HeLa cells. Positive WB detected in Jurkat cells, HEK-293 cells, HeLa cells. Observed molecular weight by Western-blot: 168 kDa

Validations



Jurkat cells were subjected to SDS PAGE followed by western blot with Catalog No:110939(GEMIN5 Antibody) at dilution of 1:1500

Preparation

This antibody was obtained by immunization of GEMIN5 recombinant protein (Accession Number: NM_015465). Purification method: Antigen affinity purified.

Formulation

PBS with 0.1% sodium azide and 50% glycerol pH 7.3.

Storage

Store at -20°C. DO NOT ALIQUOT

Clonality

Polyclonal

Ig Type

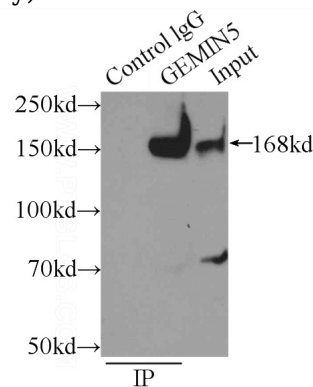
Rabbit IgG

Applications

ELISA, WB, IP, IF, IHC

Dilutions

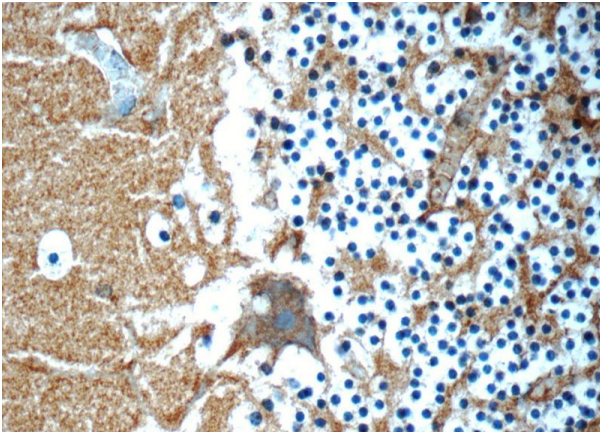
Recommended Dilution:



IP Result of anti-GEMIN5 (IP:Catalog No:110939, 5ug; Detection:Catalog No:110939 1:1000) with HeLa cells lysate 220ug.

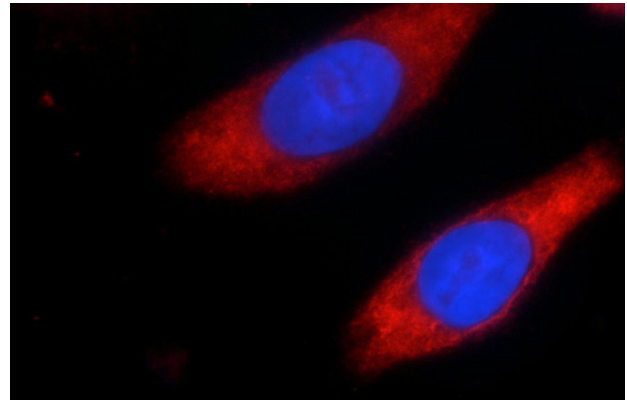
GEMIN5 antibody

Catalog Number: 110939



Immunohistochemistry of paraffin-embedded human cerebellum tissue slide using Catalog No:110939(GEMIN5 Antibody) at dilution of 1:50

(under 40x lens)



Immunofluorescent analysis of HeLa cells using Catalog No:110939(GEMIN5 Antibody) at dilution of 1:25 and Rhodamine-Goat anti-Rabbit IgG