

GEM antibody

Catalog Number: 110937

Product name

GEM antibody

Specificity

Human, Mouse, Rat; other species not tested.

Antibody description

GEM Rabbit Polyclonal antibody. Positive WB detected in Jurkat cells, human kidney tissue, mouse kidney tissue. Positive IP detected in mouse kidney tissue. Observed molecular weight by Western-blot: 34 kDa

Preparation

This antibody was obtained by immunization of GEM recombinant protein (Accession Number: NM_181702). Purification method: Antigen affinity purified.

Formulation

PBS with 0.02% sodium azide and 50% glycerol pH 7.3.

Storage

Store at -20°C. DO NOT ALIQUOT

Clonality

Polyclonal

Ig Type

Rabbit IgG

Applications

ELISA, WB, IP

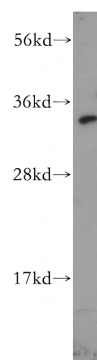
Dilutions

Recommended Dilution:

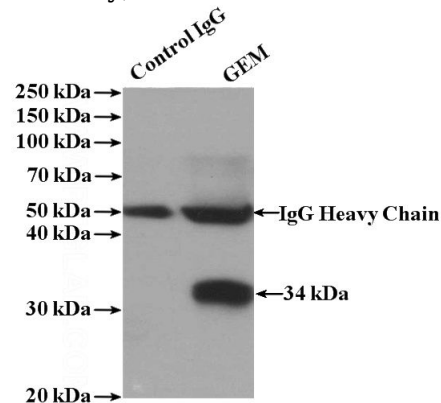
WB: 1:200-1:2000

IP: 1:200-1:1000

Validations



Jurkat cells were subjected to SDS PAGE followed by western blot with Catalog No:110937(GEM antibody) at dilution of 1:400



IP Result of anti-GEM (IP:Catalog No:110937, 4ug; Detection:Catalog No:110937 1:300) with mouse kidney tissue lysate 4000ug.