

GDI2 antibody

Catalog Number: 110928

Product name

GDI2 antibody

Specificity

human; other species not tested.

Antibody description

GDI2 Rabbit Polyclonal antibody. Positive WB detected in HepG2 cells. Positive IHC detected in human skin. Observed molecular weight by Western-blot: 46-50kd

Preparation

This antibody was obtained by immunization of Peptide (Accession Number: NM_001494). Purification method: Antigen affinity purified.

Formulation

0.1M NaHCO₃, 0.1M glycine, 0.02% sodium azide and 50% glycerol pH 7.3.

Storage

Store at -20°C. DO NOT ALIQUOT

Clonality

Polyclonal

Ig Type

Rabbit IgG

Applications

ELISA, WB, IHC

Dilutions

Recommended Dilution:

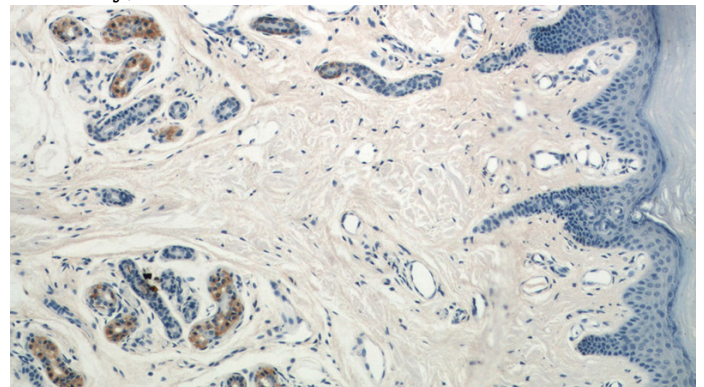
WB: 1:200-1:1000

IHC: 1:20-1:200

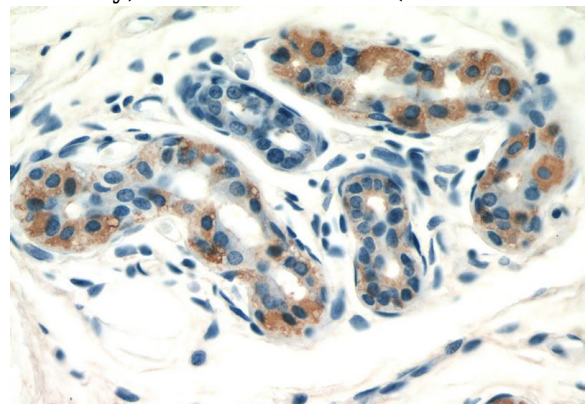
Validations



HepG2 cells were subjected to SDS PAGE followed by western blot with Catalog No:110928(GDI2 antibody) at dilution of 1:300



Immunohistochemical of paraffin-embedded human skin using Catalog No:110928(GDI2 antibody) at dilution of 1:50 (under 10x lens)



Immunohistochemical of paraffin-embedded human skin using Catalog No:110928(GDI2 antibody) at dilution of 1:50 (under 40x lens)