

# GDEP antibody



Catalog Number: 110923

## Product name

GDEP antibody

IHC: 1:20-1:200

IF: 1:20-1:200

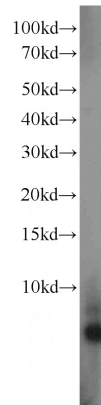
## Specificity

Human; other species not tested.

## Validations

## Antibody description

GDEP Rabbit Polyclonal antibody. Positive IF detected in PC-3 cells. Positive IHC detected in human prostate cancer tissue, human prostate hyperplasia tissue. Positive WB detected in PC-3 cells. Observed molecular weight by Western-blot: 4 kDa



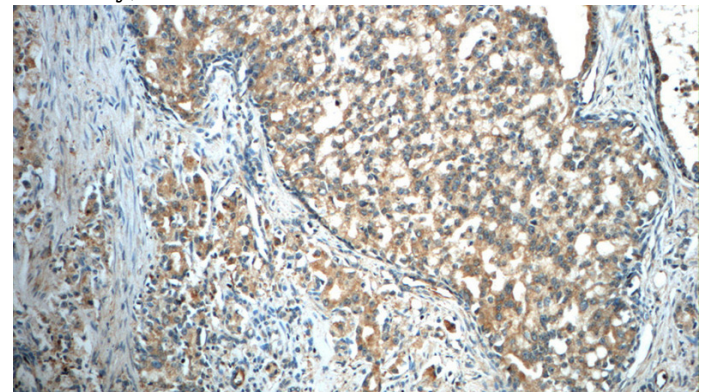
## Preparation

This antibody was obtained by immunization of GDEP recombinant protein (Accession Number: BC125139). Purification method: Antigen Affinity purified.

PC-3 cells were subjected to SDS PAGE followed by western blot with Catalog No:110923(GDEP antibody) at dilution of 1:1000

## Formulation

PBS with 0.02% sodium azide and 50% glycerol pH 7.3.



## Storage

Store at -20°C. DO NOT ALIQUOT

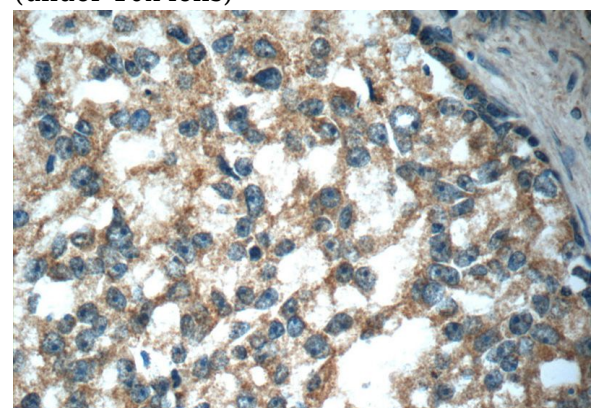
## Clonality

Polyclonal

Immunohistochemistry of paraffin-embedded human prostate cancer slide using Catalog No:110923(GDEP Antibody) at dilution of 1:50. (under 10x lens)

## Ig Type

Rabbit IgG



## Applications

ELISA, WB, IHC, IF

## Dilutions

Recommended Dilution:

WB: 1:500-1:5000

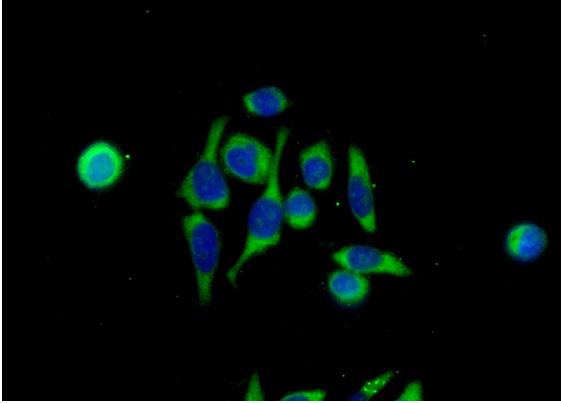
Immunohistochemistry of paraffin-embedded

# GDEP antibody

Catalog Number: 110923

---

human prostate cancer slide using Catalog No:110923(GDEP Antibody) at dilution of 1:50. (under 40x lens)



Immunofluorescent analysis of (-20oc Ethanol) fixed PC-3 cells using Catalog No:110923(GDEP Antibody) at dilution of 1:50 and Alexa Fluor 488-conjugated AffiniPure Goat Anti-Rabbit IgG(H+L)