

# G-CSFR antibody



Catalog Number: 110917

---

## Product name

G-CSFR antibody

## Specificity

Human; other species not tested.

## Antibody description

G-CSFR Rabbit Polyclonal antibody. Positive WB detected in human placenta tissue. Observed molecular weight by Western-blot: 85kd

## Preparation

This antibody was obtained by immunization of Peptide (Accession Number: NM\_000760). Purification method: Antigen affinity purified.

## Formulation

PBS with 0.02% sodium azide and 50% glycerol pH 7.3.

## Storage

Store at -20°C. DO NOT ALIQUOT

## Clonality

Polyclonal

## Ig Type

Rabbit IgG

## Applications

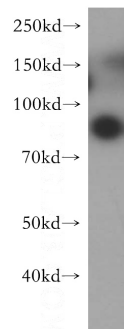
ELISA, WB

## Dilutions

Recommended Dilution:

WB: 1:500-1:5000

## Validations



human placenta tissue were subjected to SDS PAGE followed by western blot with Catalog No:110917(G-CSF-R antibody) at dilution of 1:300