

GAPDH antibody



Catalog Number: 110864

General Information

Product name:

GAPDH antibody

Immunogen:

[Human GAPDH Recombinant protein \(GST tag\)](#)

Applications:

ELISA, IHC, WB, IP, IF, FC

Specificity:

Human, Mouse, Rat, Pig; other species not tested.

Antibody description:

GAPDH Rabbit Polyclonal antibody. Positive IF detected in HepG2 cells, Hela cells. Positive IHC detected in human breast cancer tissue, human lung cancer tissue. Positive FC detected in HEK-293 cells. Positive IP detected in A549 cells. Positive WB detected in HeLa cells, A549 cells, HEK-293 cells, HepG2 cells, human testis tissue, Jurkat cells, K-562 cells, MDA-MB-453s cells, mouse heart tissue, mouse kidney tissue, mouse lung tissue, PC-13 cells, Raji cells, rat brain tissue. Observed molecular weight by Western-blot: 36 kDa

Properties

Preparation:

This antibody was obtained by immunization of GAPDH recombinant protein (Accession Number: NM_001289745). Purification method: Antigen affinity purified.

Formulation:

PBS with 0.1% sodium azide and 50% glycerol pH 7.3.

Storage:

Store at -20°C. DO NOT ALIQUOT

Clonality:

Polyclonal

Ig Type: Rabbit IgG

Applications

Recommended Dilution:

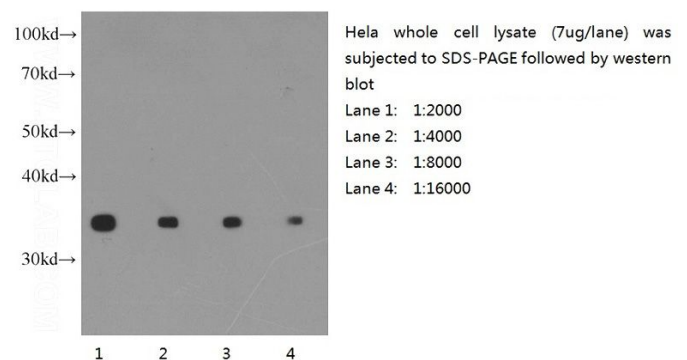
WB: 1:2000-1:20000

IP: 1:1000-1:10000

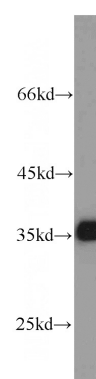
IHC: 1:20-1:200

IF: 1:20-1:200

Validations



Western blot of Hela cell with anti-GAPDH (Catalog No:117317) at various dilutions.

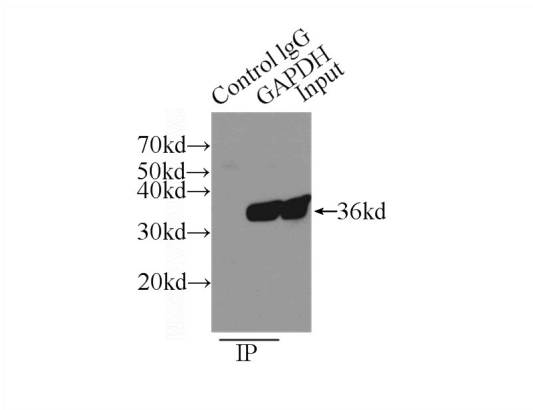


HeLa cells were subjected to SDS PAGE followed

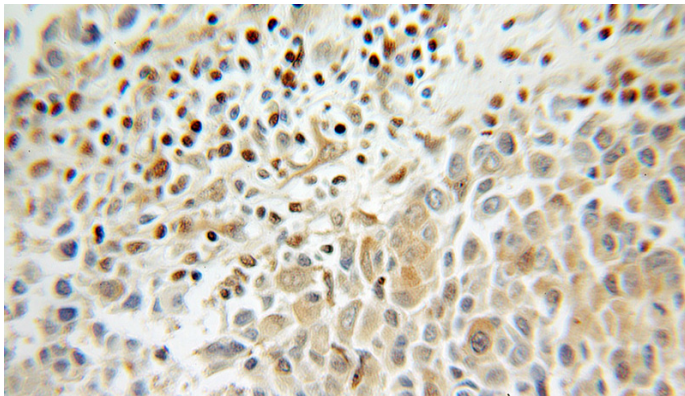
GAPDH antibody

Catalog Number: 110864

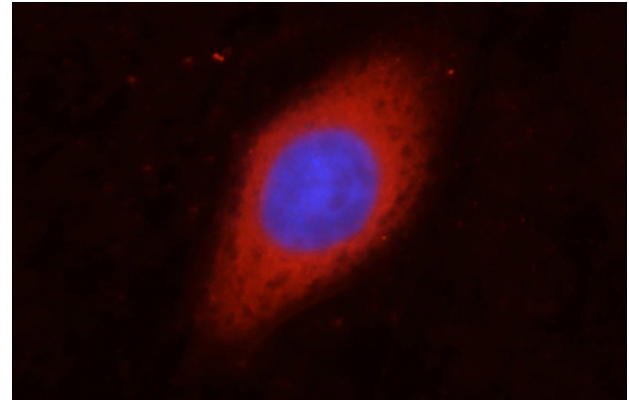
by western blot with Catalog No:117317(GAPDH antibody) at dilution of 1:5000



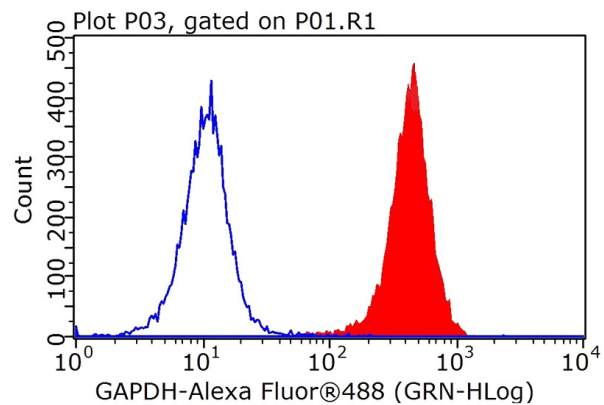
IP Result of anti-GAPDH (IP:Catalog No:117317, 3ug; Detection:Catalog No:117317 1:3000) with A549 cells lysate 3500ug.



Immunohistochemical of paraffin-embedded human breast cancer using Catalog No:117317(GAPDH antibody) at dilution of 1:100 (under 10x lens)



Immunofluorescent analysis of HepG2 cells, using GAPDH antibody Catalog No:117317 at 1:50 dilution and Rhodamine-labeled goat anti-rabbit IgG (red). Blue pseudocolor = DAPI (fluorescent DNA dye).



1×10^6 HEK-293 cells were stained with .2ug GAPDH antibody (Catalog No:117317, red) and control antibody (blue). Fixed with 90% MeOH blocked with 3% BSA (30 min). Alexa Fluor 488 - Goat anti-Rabbit IgG with dilution 1:100.