

# gamma catenin antibody

Catalog Number: 110857

## Product name

gamma catenin antibody

## Specificity

Human, Mouse, Rat; other species not tested.

## Antibody description

gamma catenin Rabbit Polyclonal antibody. Positive IHC detected in human pancreas cancer tissue, human breast cancer tissue, human colon cancer tissue, human skin tissue. Positive WB detected in mouse heart tissue, A431 cells, HeLa cells, human heart tissue. Observed molecular weight by Western-blot: 82 kDa

## Preparation

This antibody was obtained by immunization of gamma catenin recombinant protein (Accession Number: NM\_021991). Purification method: Antigen affinity purified.

## Formulation

PBS with 0.1% sodium azide and 50% glycerol pH 7.3.

## Storage

Store at -20°C. DO NOT ALIQUOT

## Clonality

Polyclonal

## Ig Type

Rabbit IgG

## Applications

ELISA, IHC, WB

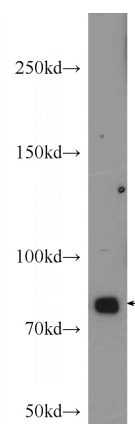
## Dilutions

Recommended Dilution:

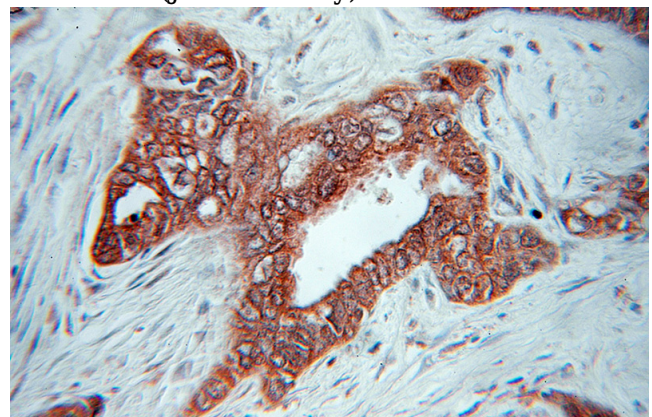
WB: 1:500-1:5000

IHC: 1:20-1:200

## Validations



mouse heart tissue were subjected to SDS PAGE followed by western blot with Catalog No:110857(JUP Antibody) at dilution of 1:1000



Immunohistochemical of paraffin-embedded human pancreas cancer using Catalog No:110857(JUP antibody) at dilution of 1:50 (under 10x lens)