

Product name

GALE antibody

IP: 1:200-1:1000

IHC: 1:20-1:200

Specificity

Human, Mouse, Rat; other species not tested.

Antibody description

GALE Rabbit Polyclonal antibody. Positive IHC detected in human malignant melanoma tissue. Positive WB detected in A375 cells, HeLa cells, MCF7 cells. Positive IP detected in HeLa cells. Observed molecular weight by Western-blot: 38 kDa

Preparation

This antibody was obtained by immunization of GALE recombinant protein (Accession Number: NM_000403). Purification method: Antigen affinity purified.

Formulation

PBS with 0.02% sodium azide and 50% glycerol pH 7.3.

Storage

Store at -20°C. DO NOT ALIQUOT

Clonality

Polyclonal

Ig Type

Rabbit IgG

Applications

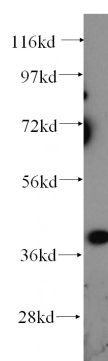
ELISA, WB, IHC, IP

Dilutions

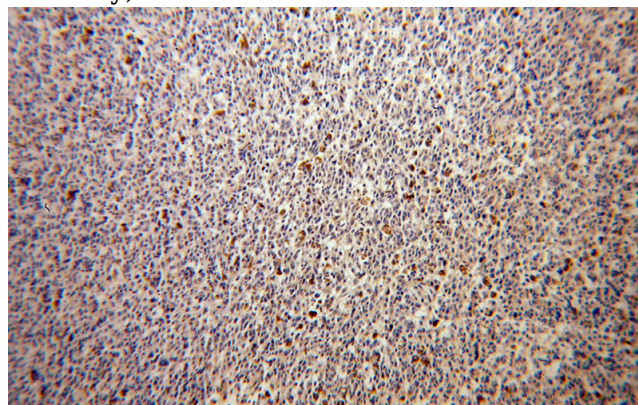
Recommended Dilution:

WB: 1:200-1:1000

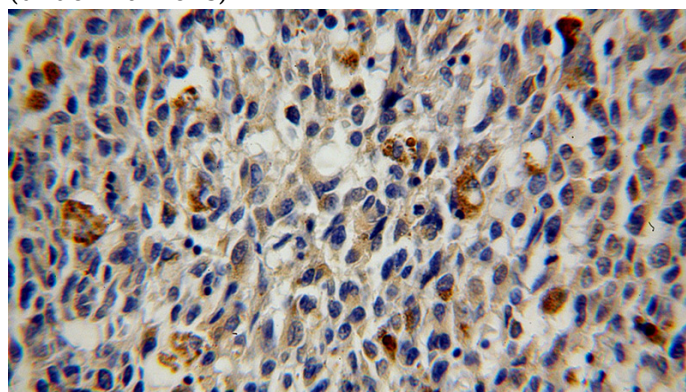
Validations



A375 cells were subjected to SDS PAGE followed by western blot with Catalog No:110835(GALE antibody) at dilution of 1:300



Immunohistochemical of paraffin-embedded human malignant melanoma using Catalog No:110835(GALE antibody) at dilution of 1:100 (under 10x lens)



Immunohistochemical of paraffin-embedded

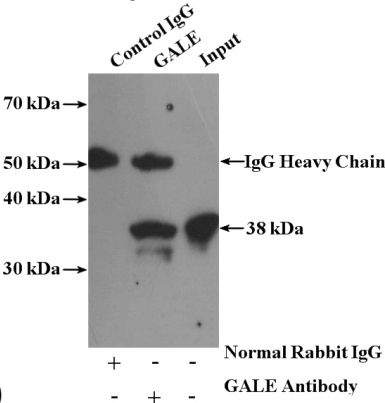
GALE antibody



Catalog Number: 110835

human malignant melanoma using Catalog No:110835(GALE antibody) at dilution of 1:100

IP Result of anti-GALE (IP:Catalog No:110835, 4ug; Detection:Catalog No:110835 1:300) with HeLa cells lysate 1080ug.



(under 40x lens)