

FSTL1 antibody



Catalog Number: 110784

Product name

FSTL1 antibody

WB: 1:200-1:2000

IP: 1:200-1:2000

Specificity

Human, Mouse, Rat; other species not tested.

IHC: 1:20-1:200

Antibody description

FSTL1 Rabbit Polyclonal antibody. Positive IHC detected in human pancreas tissue, human gliomas tissue, human heart tissue, rat colon tissue, rat testis tissue. Positive WB detected in A2780 cells, human placenta tissue. Positive IP detected in A2780 cells. Observed molecular weight by Western-blot: 40-55 kDa

Preparation

This antibody was obtained by immunization of FSTL1 recombinant protein (Accession Number: NM_007085). Purification method: Antigen affinity purified.

Formulation

PBS with 0.02% sodium azide and 50% glycerol pH 7.3.

Storage

Store at -20°C. DO NOT ALIQUOT

Clonality

Polyclonal

Ig Type

Rabbit IgG

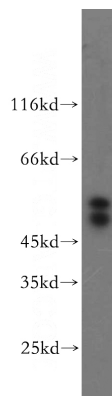
Applications

ELISA, WB, IHC, IP

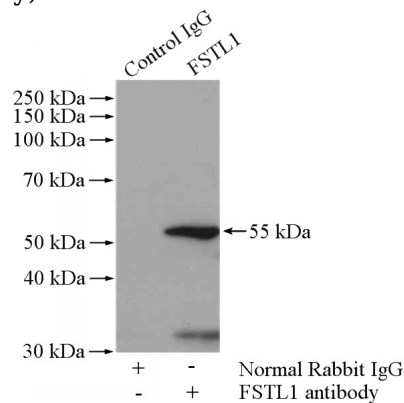
Dilutions

Recommended Dilution:

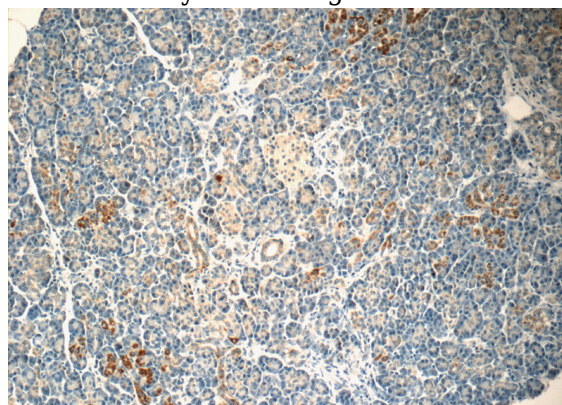
Validations



A2780 cells were subjected to SDS PAGE followed by western blot with Catalog No:110784(FSTL1 antibody) at dilution of 1:300



IP Result of anti-FSTL1 (IP:Catalog No:110784, 4ug; Detection:Catalog No:110784 1:500) with A2780 cells lysate 960ug.

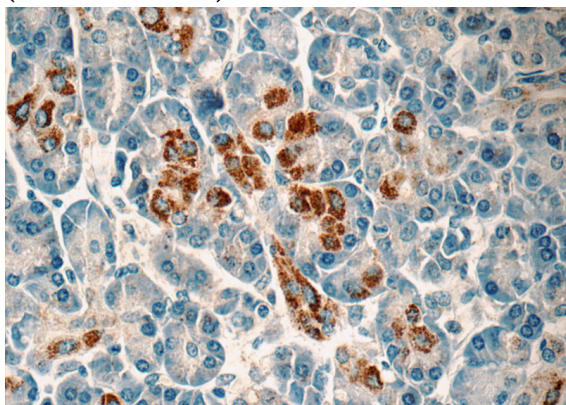


FSTL1 antibody



Catalog Number: 110784

Immunohistochemistry of paraffin-embedded human pancreas tissue slide using Catalog No:110784(FSTL1 Antibody) at dilution of 1:50 (under 10x lens)



Immunohistochemistry of paraffin-embedded human pancreas tissue slide using Catalog No:110784(FSTL1 Antibody) at dilution of 1:50 (under 40x lens)