

# FXR2 antibody

Catalog Number: 110753

## Product name

FXR2 antibody

IP: 1:200-1:2000

IF: 1:10-1:100

## Specificity

Human, Mouse, Rat; other species not tested.

## Antibody description

FXR2 Rabbit Polyclonal antibody. Positive IP detected in HeLa cells. Positive WB detected in HeLa cells, human brain tissue. Positive IF detected in HepG2 cells. Observed molecular weight by Western-blot: 95 kDa

## Preparation

This antibody was obtained by immunization of FXR2 recombinant protein (Accession Number: NM\_004860). Purification method: Antigen affinity purified.

## Formulation

PBS with 0.1% sodium azide and 50% glycerol pH 7.3.

## Storage

Store at -20°C. DO NOT ALIQUOT

## Clonality

Polyclonal

## Ig Type

Rabbit IgG

## Applications

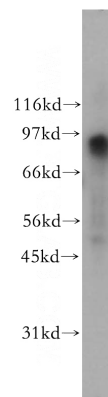
ELISA, WB, IF, IP

## Dilutions

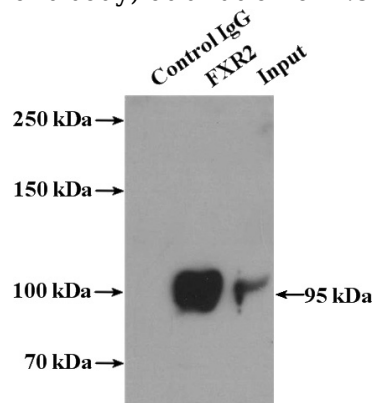
Recommended Dilution:

WB: 1:500-1:5000

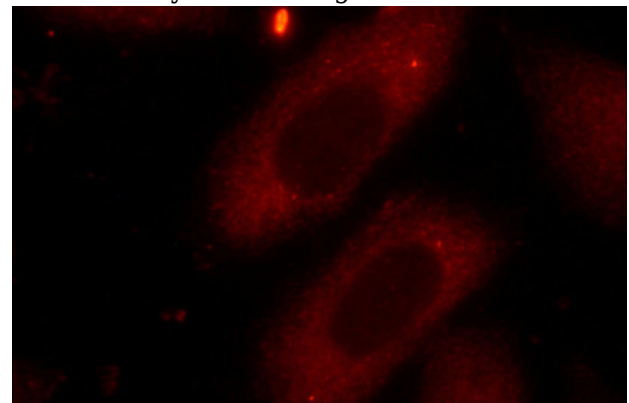
## Validations



HeLa cells were subjected to SDS PAGE followed by western blot with Catalog No:110753(FXR2 antibody) at dilution of 1:500



IP Result of anti-FXR2 (IP:Catalog No:110753, 4ug; Detection:Catalog No:110753 1:500) with HeLa cells lysate 3200ug.



Immunofluorescent analysis of HepG2 cells using Catalog No:110753(FXR2 Antibody) at dilution of

# FXR2 antibody



Catalog Number: 110753

---

1:25 and Rhodamine-Goat anti-Rabbit IgG