

# FREM1 antibody

Catalog Number: 110720

## Product name

FREM1 antibody

IHC: 1:20-1:200

IF: 1:10-1:100

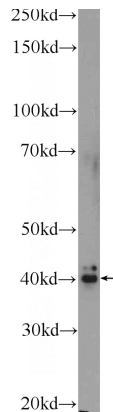
## Specificity

Human; other species not tested.

## Validations

## Antibody description

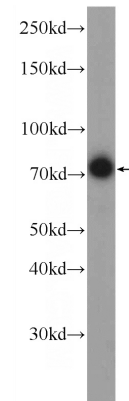
FREM1 Rabbit Polyclonal antibody. Positive WB detected in human plasma tissue, HepG2 cells. Positive IHC detected in human liver cancer tissue, human breast cancer tissue. Positive IF detected in HepG2 cells. Observed molecular weight by Western-blot: 40-43 kDa; 70-80 kDa



## Preparation

This antibody was obtained by immunization of FREM1 recombinant protein (Accession Number: XM\_006716729). Purification method: Antigen affinity purified.

human plasma tissue were subjected to SDS PAGE followed by western blot with Catalog No:110720(FREM1 Antibody) at dilution of 1:300



## Formulation

PBS with 0.1% sodium azide and 50% glycerol pH 7.3.

## Storage

Store at -20°C. DO NOT ALIQUOT

## Clonality

Polyclonal

## Ig Type

Rabbit IgG

## Applications

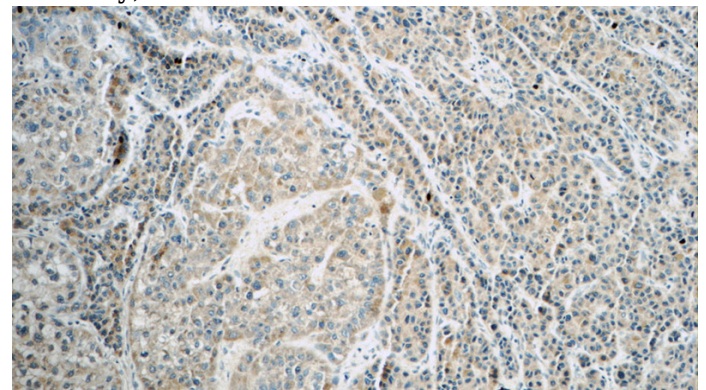
ELISA, WB, IHC, IF

## Dilutions

Recommended Dilution:

WB: 1:200-1:1000

HepG2 cells were subjected to SDS PAGE followed by western blot with Catalog No:110720(FREM1 Antibody) at dilution of 1:300



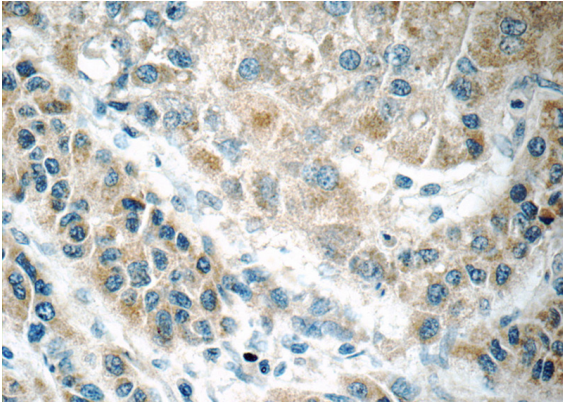
Immunohistochemistry of paraffin-embedded human liver cancer tissue slide using Catalog

# FREM1 antibody

Catalog Number: 110720

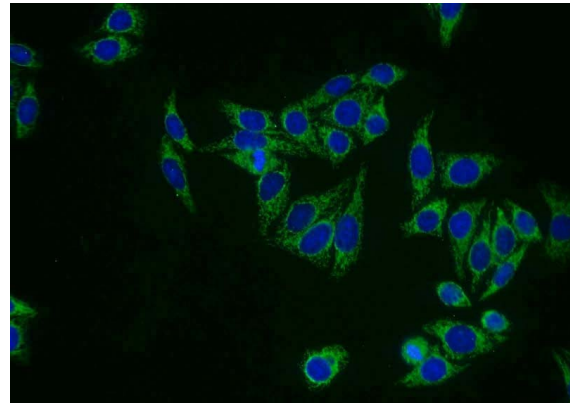
---

No:110720(FREM1 Antibody) at dilution of 1:50  
(under 10x lens)



Immunohistochemistry of paraffin-embedded human liver cancer tissue slide using Catalog No:110720(FREM1 Antibody) at dilution of 1:50

(under 40x lens)



Immunofluorescent analysis of HepG2 cells using Catalog No:110720(FREM1 Antibody) at dilution of 1:25 and Alexa Fluor 488-conjugated AffiniPure Goat Anti-Rabbit IgG(H+L)