

# Fibrinogen beta chain antibody



Catalog Number: 110656

## Product name

Fibrinogen beta chain antibody

WB: 1:500-1:5000

IHC: 1:20-1:200

## Specificity

Human, Mouse, Rat; other species not tested.

## Antibody description

Fibrinogen beta chain Rabbit Polyclonal antibody. Positive IHC detected in human kidney tissue. Positive WB detected in mouse heart tissue, mouse brain tissue, mouse kidney tissue, mouse liver tissue. Observed molecular weight by Western-blot: 47-56 kDa

## Preparation

This antibody was obtained by immunization of Fibrinogen beta chain recombinant protein (Accession Number: NM\_005141). Purification method: Antigen affinity purified.

## Formulation

PBS with 0.1% sodium azide and 50% glycerol pH 7.3.

## Storage

Store at -20°C. DO NOT ALIQUOT

## Clonality

Polyclonal

## Ig Type

Rabbit IgG

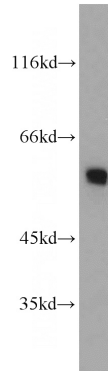
## Applications

ELISA, WB, IHC

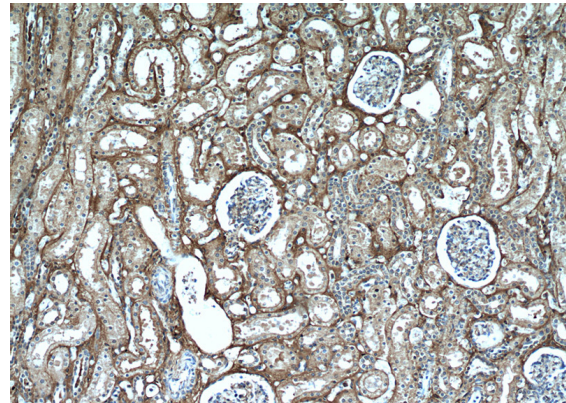
## Dilutions

Recommended Dilution:

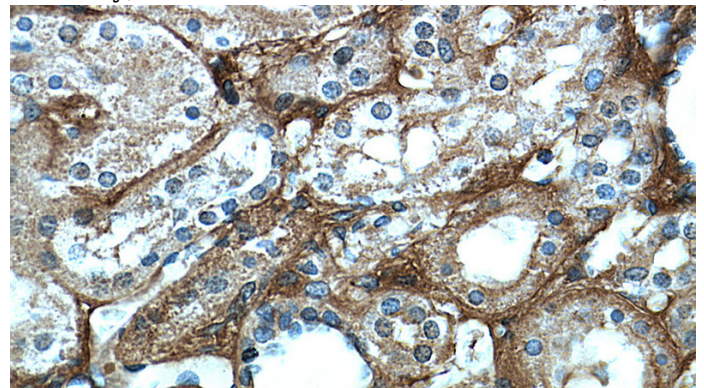
## Validations



mouse heart tissue were subjected to SDS PAGE followed by western blot with Catalog No:110656(FGB antibody) at dilution of 1:1000



Immunohistochemical of paraffin-embedded human kidney using Catalog No:110656(FGB antibody) at dilution of 1:50 (under 40x lens)



Immunohistochemical of paraffin-embedded human kidney using Catalog No:110656(FGB antibody) at dilution of 1:50 (under 40x lens)