

FHL2 antibody



Catalog Number: 110650

Product name

FHL2 antibody

WB: 1:1000-1:10000

IP: 1:500-1:5000

Specificity

Human, Mouse, Rat; other species not tested.

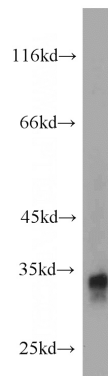
IHC: 1:20-1:200

IF: 1:50-1:500

Antibody description

FHL2 Rabbit Polyclonal antibody. Positive IF detected in HeLa cells. Positive IHC detected in human heart tissue. Positive IP detected in mouse skeletal muscle tissue. Positive WB detected in mouse ovary tissue, HeLa cells, NIH/3T3 cells. Observed molecular weight by Western-blot: 32 kDa

Validations



Preparation

This antibody was obtained by immunization of FHL2 recombinant protein (Accession Number: NM_201557). Purification method: Antigen affinity purified.

mouse ovary tissue were subjected to SDS PAGE followed by western blot with Catalog No:110650(FHL2 antibody) at dilution of 1:1000

Formulation

PBS with 0.02% sodium azide and 50% glycerol pH 7.3.

Storage

Store at -20°C. DO NOT ALIQUOT

Clonality

Polyclonal

Ig Type

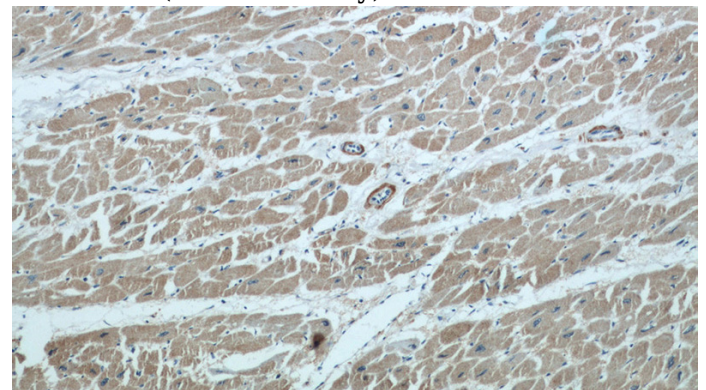
Rabbit IgG

Applications

ELISA, WB, IHC, IP, IF

Dilutions

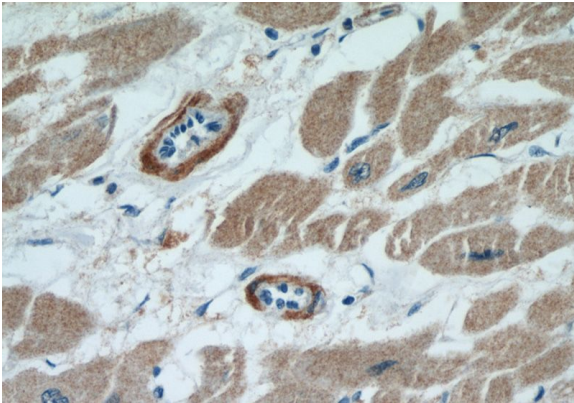
Recommended Dilution:



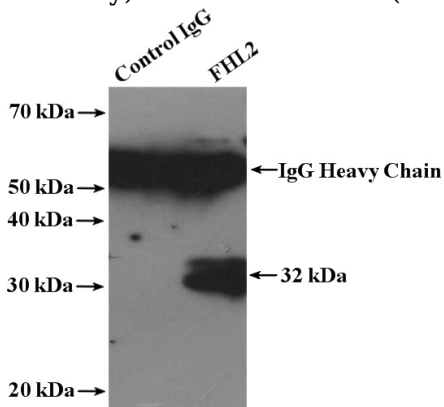
Immunohistochemical of paraffin-embedded human heart using Catalog No:110650(FHL2 antibody) at dilution of 1:50 (under 10x lens)

FHL2 antibody

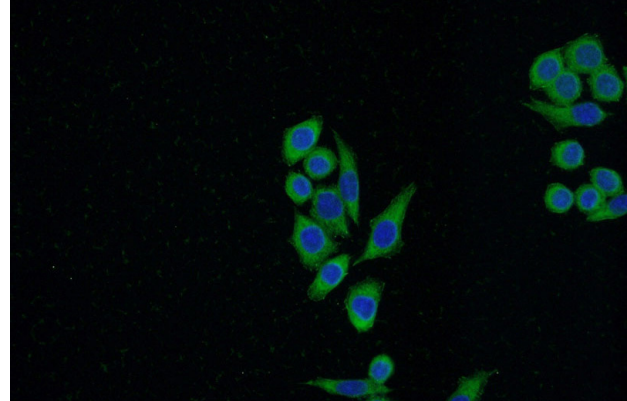
Catalog Number: 110650



Immunohistochemical of paraffin-embedded human heart using Catalog No:110650(FHL2 antibody) at dilution of 1:50 (under 40x lens)



IP Result of anti-FHL2 (IP:Catalog No:110650, 4ug; Detection:Catalog No:110650 1:1000) with mouse skeletal muscle tissue lysate 2200ug.



Immunofluorescent analysis of (-20oc Ethanol) fixed HeLa cells using Catalog No:110650(FHL2 Antibody) at dilution of 1:50 and Alexa Fluor 488-conjugated AffiniPure Goat Anti-Rabbit IgG(H+L)