

# FEN1 antibody

Catalog Number: 110618

## Product name

FEN1 antibody

IP: 1:200-1:2000

IHC: 1:20-1:200

## Specificity

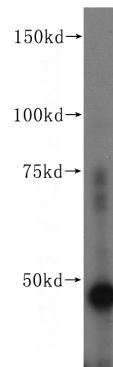
Human, Mouse, Rat; other species not tested.

IF: 1:50-1:500

## Antibody description

FEN1 Rabbit Polyclonal antibody. Positive IHC detected in human colon cancer tissue. Positive IF detected in NIH/3T3 cells. Positive IP detected in NIH/3T3 cells. Positive WB detected in NIH/3T3 cells, HeLa cells, U-937 cells. Observed molecular weight by Western-blot: 48 kDa

## Validations



## Preparation

This antibody was obtained by immunization of FEN1 recombinant protein (Accession Number: NM\_004111). Purification method: Antigen affinity purified.

NIH/3T3 cells were subjected to SDS PAGE followed by western blot with Catalog No:110618(FEN1 antibody) at dilution of 1:500

## Formulation

PBS with 0.02% sodium azide and 50% glycerol pH 7.3.

## Storage

Store at -20°C. DO NOT ALIQUOT

## Clonality

Polyclonal

## Ig Type

Rabbit IgG

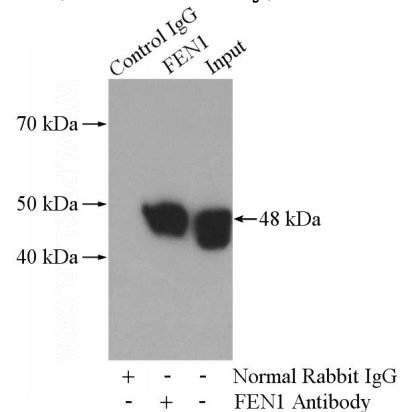
## Applications

ELISA, WB, IHC, IP, IF

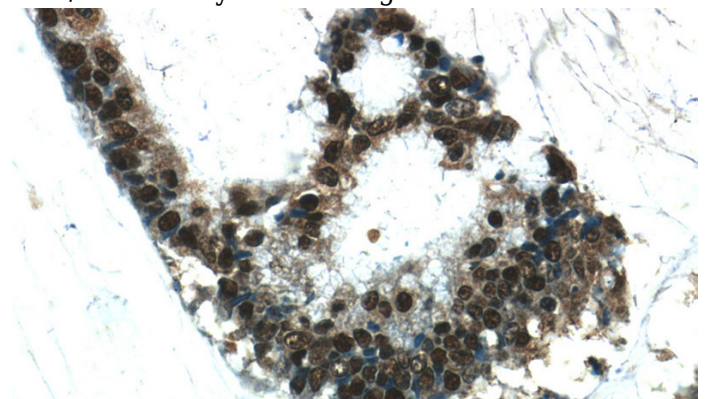
## Dilutions

Recommended Dilution:

WB: 1:500-1:5000



IP Result of anti-FEN1 (IP:Catalog No:110618, 4ug; Detection:Catalog No:110618 1:500) with NIH/3T3 cells lysate 1200ug.

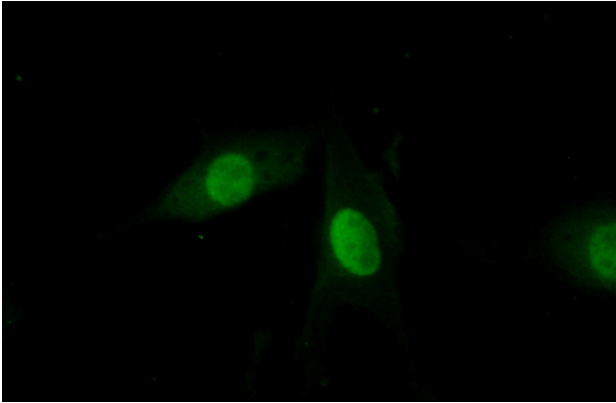


# FEN1 antibody

Catalog Number: 110618

---

Immunohistochemistry of paraffin-embedded human colon cancer tissue slide using Catalog No:110618(FEN1 Antibody) at dilution of 1:50 (under 40x lens)



Immunofluorescent analysis of (10% Formaldehyde) fixed NIH/3T3 cells using Catalog No:110618(FEN1 Antibody) at dilution of 1:50 and Alexa Fluor 488-conjugated AffiniPure Goat Anti-Rabbit IgG(H+L)