

FCRLB antibody

Catalog Number: 110605

Product name

FCRLB antibody

Specificity

Human, Mouse, Rat; other species not tested.

Antibody description

FCRLB Rabbit Polyclonal antibody. Positive WB detected in Transfected HEK-293 cells, A549 cells, mouse lung tissue. Positive IHC detected in human lung cancer tissue.

Preparation

This antibody was obtained by immunization of FCRLB recombinant protein (Accession Number: BC067080). Purification method: Antigen affinity purified.

Formulation

PBS with 0.02% sodium azide and 50% glycerol pH 7.3.

Storage

Store at -20°C. DO NOT ALIQUOT

Clonality

Polyclonal

Ig Type

Rabbit IgG

Applications

ELISA, IHC, WB

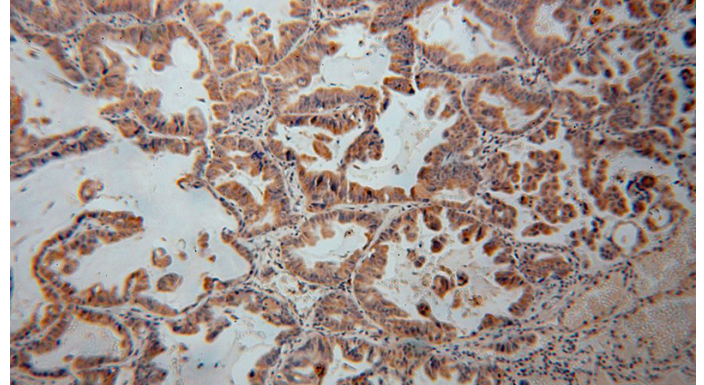
Dilutions

Recommended Dilution:

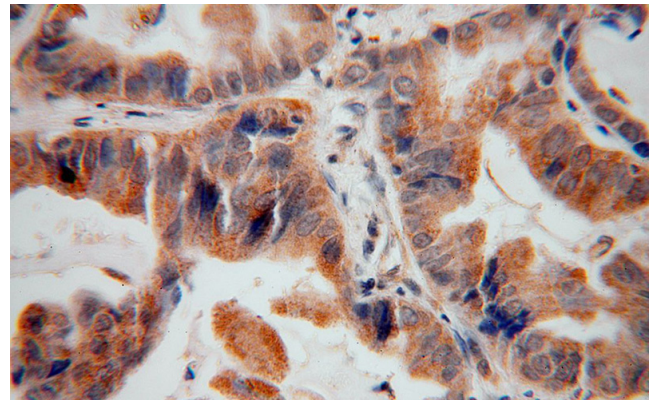
WB: 1:500-1:5000

IHC: 1:20-1:200

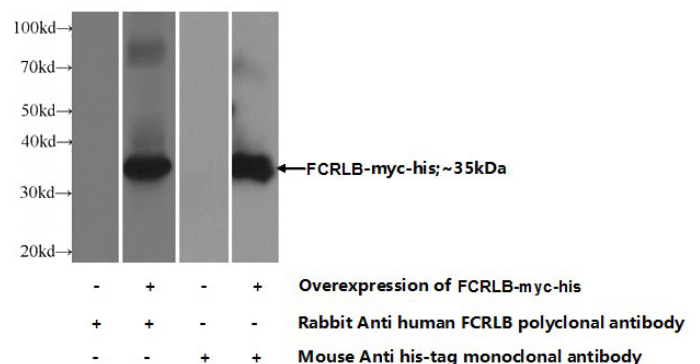
Validations



Immunohistochemical of paraffin-embedded human lung cancer using Catalog No:110605(FCRLB antibody) at dilution of 1:100 (under 10x lens)



Immunohistochemical of paraffin-embedded human lung cancer using Catalog No:110605(FCRLB antibody) at dilution of 1:100 (under 40x lens)



Transfected HEK-293 cells were subjected to SDS PAGE followed by western blot with Catalog No:110605(FCRLB Antibody) at dilution of 1:1000