

FBXL14 antibody

Catalog Number: 110542

Product name

FBXL14 antibody

IHC: 1:20-1:200

IF: 1:20-1:200

Specificity

Human, Mouse, Rat; other species not tested.

Antibody description

FBXL14 Rabbit Polyclonal antibody. Positive IF detected in HepG2 cells. Positive IHC detected in human liver tissue. Positive WB detected in HepG2 cells. Observed molecular weight by Western-blot: 46 kDa

Preparation

This antibody was obtained by immunization of FBXL14 recombinant protein (Accession Number: NM_152441). Purification method: Antigen affinity purified.

Formulation

PBS with 0.02% sodium azide and 50% glycerol pH 7.3.

Storage

Store at -20°C. DO NOT ALIQUOT

Clonality

Polyclonal

Ig Type

Rabbit IgG

Applications

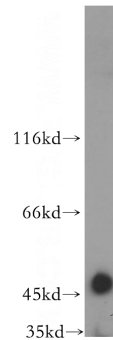
ELISA, WB, IHC, IF

Dilutions

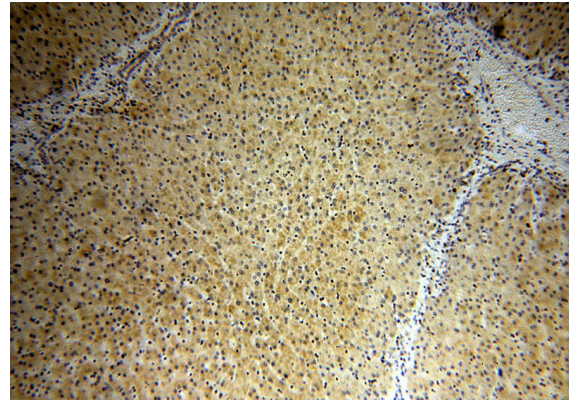
Recommended Dilution:

WB: 1:200-1:2000

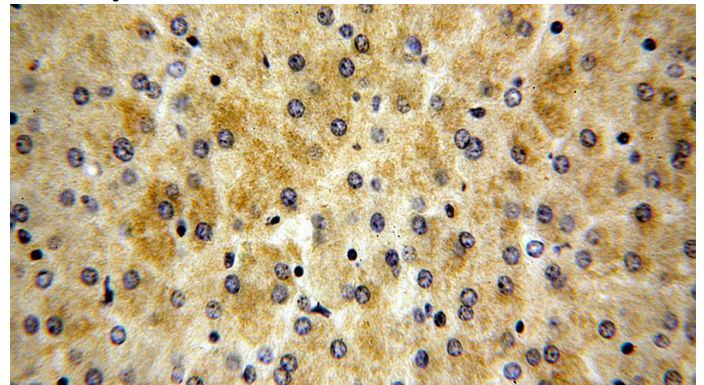
Validations



HepG2 cells were subjected to SDS PAGE followed by western blot with Catalog No:110542(FBXL14 antibody) at dilution of 1:800



Immunohistochemical of paraffin-embedded human liver using Catalog No:110542(FBXL14 antibody) at dilution of 1:50 (under 10x lens)

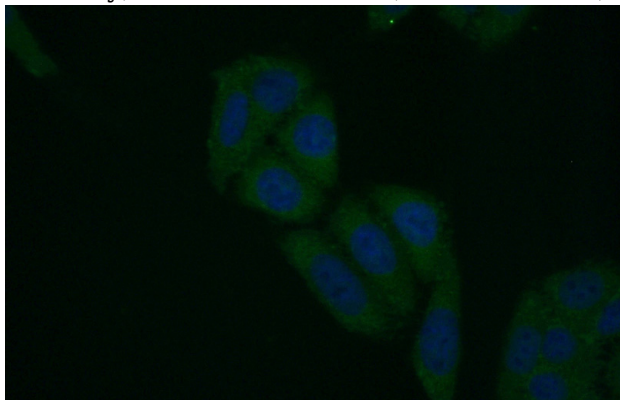


Immunohistochemical of paraffin-embedded human liver using Catalog No:110542(FBXL14

FBXL14 antibody

Catalog Number: 110542

antibody) at dilution of 1:50 (under 40x lens)



Immunofluorescent analysis of (10% Formaldehyde) fixed HepG2 cells using Catalog No:110542(FBXL14 Antibody) at dilution of 1:50 and Alexa Fluor 488-conjugated AffiniPure Goat Anti-Rabbit IgG(H+L)