

FASTKD3 antibody



Catalog Number: 110531

Product name

FASTKD3 antibody

Specificity

Human, Mouse, Rat; other species not tested.

Antibody description

FASTKD3 Rabbit Polyclonal antibody. Positive IF detected in transfected cells, HeLa cells, HepG2 cells. Positive WB detected in HepG2 cells, HeLa, HeLa cells. Observed molecular weight by Western-blot: 70 kDa

Preparation

This antibody was obtained by immunization of FASTKD3 recombinant protein (Accession Number: BC001295). Purification method: Antigen affinity purified.

Formulation

PBS with 0.1% sodium azide and 50% glycerol pH 7.3.

Storage

Store at -20°C. DO NOT ALIQUOT

Clonality

Polyclonal

Ig Type

Rabbit IgG

Applications

ELISA, IF, WB

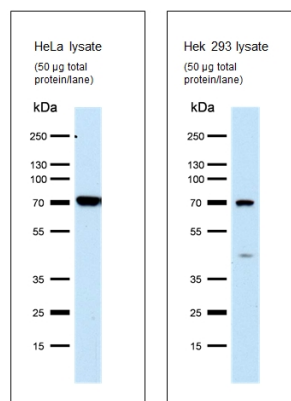
Dilutions

Recommended Dilution:

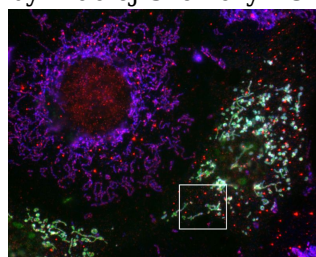
WB: 1:200-1:1000

IF: 1:20-1:200

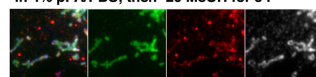
Validations



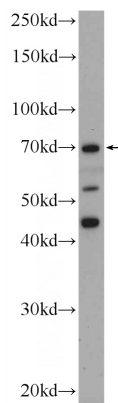
WB result of FASTKD3 antibody (Catalog No:110531, 1:200) with HeLa and 293 cell lysate by Maciej Szewczyk University of Warsaw.



KD3-YFP/PTF anti-FAST-KD3
human anti-mito (Immunovision),
transfected COS7 cells, fixed 15min
in 4% pFA/PBS; then -20 MeOH for 5'.



IF result of anti-FASTKD3 (Catalog No:110531, 1:200) with transfected COS7 cell by Dr. Nancy



Kedersha. 20kd→

HepG2 cells were subjected to SDS PAGE followed by western blot with Catalog No:110531(FASTKD3 Antibody) at dilution of 1:300