

FAM92A1 antibody

Catalog Number: 110510

Product name

FAM92A1 antibody

IP: 1:200-1:2000

IHC: 1:20-1:200

Specificity

Human; other species not tested.

IF: 1:20-1:200

Antibody description

FAM92A1 Rabbit Polyclonal antibody. Positive IHC detected in human renal cell carcinoma tissue. Positive IF detected in HeLa cells. Positive IP detected in HeLa cells. Positive WB detected in HeLa cells. Observed molecular weight by Western-blot: 29-33 kDa

Preparation

This antibody was obtained by immunization of FAM92A1 recombinant protein (Accession Number: BC014598). Purification method: Antigen affinity purified.

Formulation

PBS with 0.1% sodium azide and 50% glycerol pH 7.3.

Storage

Store at -20°C. DO NOT ALIQUOT

Clonality

Polyclonal

Ig Type

Rabbit IgG

Applications

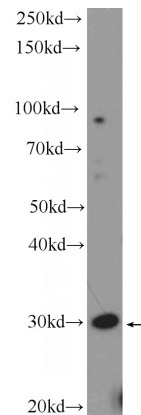
ELISA, IHC, WB, IF, IP

Dilutions

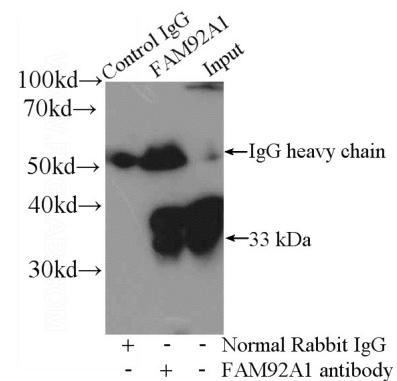
Recommended Dilution:

WB: 1:200-1:2000

Validations

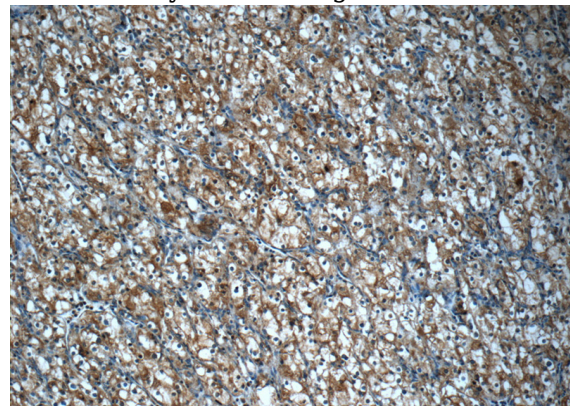


HeLa cells were subjected to SDS PAGE followed by western blot with Catalog No:110510(FAM92A1 Antibody) at dilution of



1:600

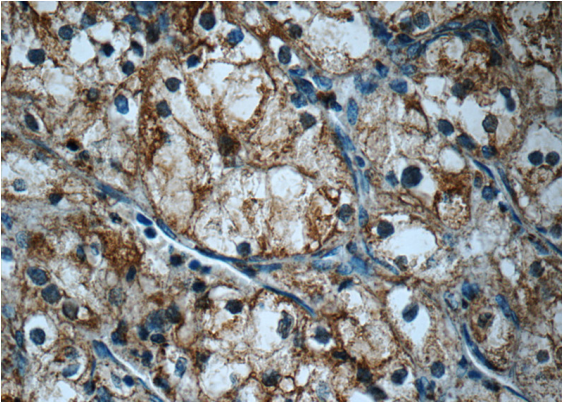
IP Result of anti-FAM92A1 (IP:Catalog No:110510, 4ug; Detection:Catalog No:110510 1:500) with HeLa cells lysate 4000ug.



FAM92A1 antibody

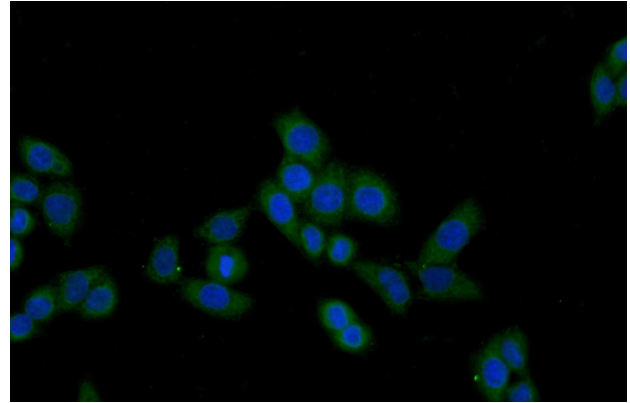
Catalog Number: 110510

Immunohistochemistry of paraffin-embedded human renal cell carcinoma tissue slide using Catalog No:110510(FAM92A1 Antibody) at dilution of 1:50 (under 10x lens)



Immunohistochemistry of paraffin-embedded human renal cell carcinoma tissue slide using

Catalog No:110510(FAM92A1 Antibody) at dilution of 1:50 (under 40x lens)



Immunofluorescent analysis of HeLa cells using Catalog No:110510(FAM92A1 Antibody) at dilution of 1:50 and Alexa Fluor 488-conjugated AffiniPure Goat Anti-Rabbit IgG(H+L)