

EXD1 antibody

Catalog Number: 110497

Product name

EXD1 antibody

Specificity

Human, Mouse, Rat; other species not tested.

Antibody description

EXD1 Rabbit Polyclonal antibody. Positive WB detected in HeLa cells, SH-SY5Y cells. Positive IF detected in HeLa cells. Observed molecular weight by Western-blot: 36 kDa; 58 kDa; 75 kDa

Preparation

This antibody was obtained by immunization of EXD1 recombinant protein (Accession Number: XM_047432210). Purification method: Antigen affinity purified.

Formulation

PBS with 0.1% sodium azide and 50% glycerol pH 7.3.

Storage

Store at -20°C. DO NOT ALIQUOT

Clonality

Polyclonal

Ig Type

Rabbit IgG

Applications

ELISA, WB, IF

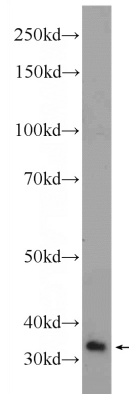
Dilutions

Recommended Dilution:

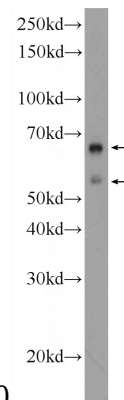
WB: 1:200-1:1000

IF: 1:20-1:200

Validations

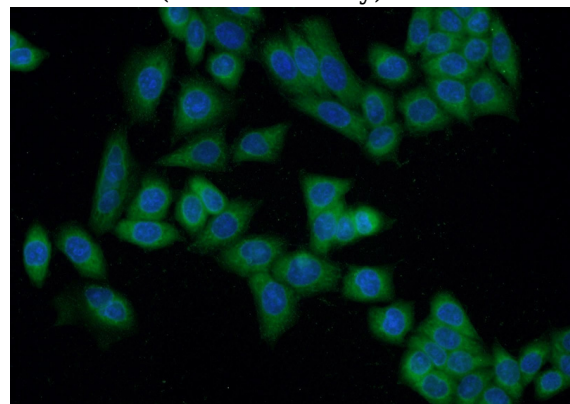


HeLa cells were subjected to SDS PAGE followed by western blot with Catalog No:110497(EXD1



Antibody) at dilution of 1:300

SH-SY5Y cells were subjected to SDS PAGE followed by western blot with Catalog No:110497(EXD1 Antibody) at dilution of 1:600



Immunofluorescent analysis of HeLa cells using Catalog No:110497(EXD1 Antibody) at dilution of 1:50 and Alexa Fluor 488-conjugated AffiniPure Goat Anti-Rabbit IgG(H+L)