

ETS2 antibody

Catalog Number: 110487

General Information

Product name:

ETS2 antibody

Immunogen:

Applications:

ELISA, IP, WB

Specificity:

Human, Mouse, Rat; other species not tested.

Antibody description:

ETS2 Rabbit Polyclonal antibody. Positive WB detected in K-562 cells, HeLa cells, MCF7 cells, mouse kidney tissue, PC-3 cells. Positive IP detected in HeLa cells. Observed molecular weight by Western-blot: 53 kDa

Properties

Preparation:

This antibody was obtained by immunization of ETS2 recombinant protein (Accession Number: NM_005239). Purification method: Antigen affinity purified.

Formulation:

PBS with 0.1% sodium azide and 50% glycerol pH 7.3.

Storage:

Store at -20°C. DO NOT ALIQUOT

Clonality:

Polyclonal

Ig Type: Rabbit IgG

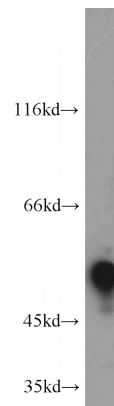
Applications

Recommended Dilution:

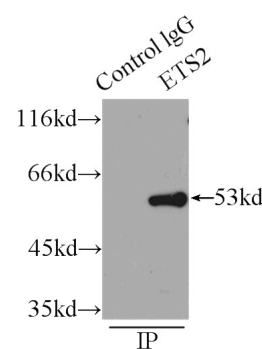
WB: 1:500-1:5000

IP: 1:200-1:2000

Validations



K-562 cells were subjected to SDS PAGE followed by western blot with Catalog No:110487(ETS2 antibody) at dilution of 1:1000



IP Result of anti-ETS2 (IP:Catalog No:110487, 3ug; Detection:Catalog No:110487 1:600) with HeLa cells lysate 5000ug.