

ETFA antibody

Catalog Number: 110483

Product name

ETFA antibody

WB: 1:200-1:2000

IHC: 1:20-1:200

Specificity

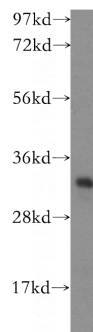
Human, Mouse, Rat; other species not tested.

IF: 1:10-1:100

Antibody description

ETFA Rabbit Polyclonal antibody. Positive WB detected in mouse small intestine tissue, human ileum tissue, Y79 cells. Positive IF detected in MCF-7 cells. Positive IHC detected in human breast cancer tissue. Positive FC detected in MCF-7 cells. Observed molecular weight by Western-blot: 30 kDa

Validations



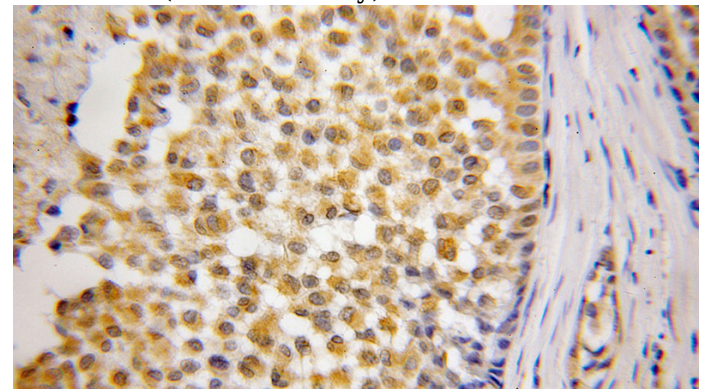
Preparation

This antibody was obtained by immunization of ETFA recombinant protein (Accession Number: NM_000126). Purification method: Antigen affinity purified.

mouse small intestine tissue were subjected to SDS PAGE followed by western blot with Catalog No:110483(ETFA antibody) at dilution of 1:1000

Formulation

PBS with 0.1% sodium azide and 50% glycerol pH 7.3.



Storage

Store at -20°C. DO NOT ALIQUOT

Clonality

Polyclonal

Immunohistochemical of paraffin-embedded human breast cancer using Catalog No:110483(ETFA antibody) at dilution of 1:50 (under 40x lens)

Ig Type

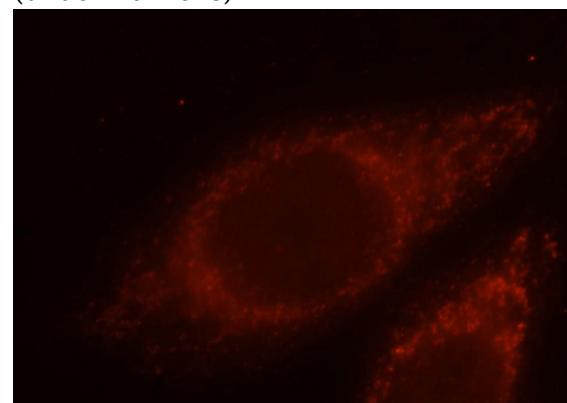
Rabbit IgG

Applications

ELISA, WB, IHC, IF, FC

Dilutions

Recommended Dilution:

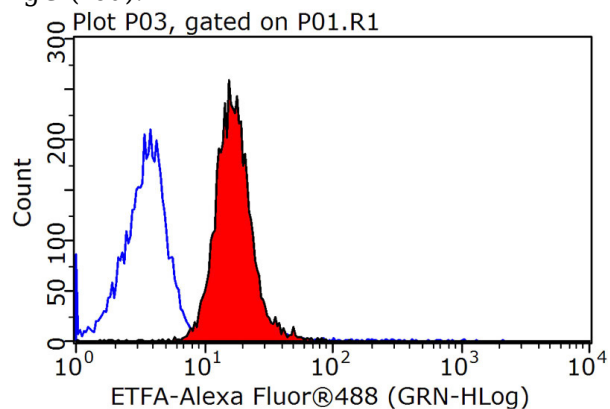


ETFA antibody



Catalog Number: 110483

Immunofluorescent analysis of MCF-7 cells, using PNR2 antibody Catalog No:110483 at 1:25 dilution and Rhodamine-labeled goat anti-rabbit IgG (red).



1X10⁶ MCF-7 cells were stained with 0.2ug ETFA antibody (Catalog No:110483, red) and control antibody (blue). Fixed with 90% MeOH blocked with 3% BSA (30 min). Alexa Fluor 488-conjugated AffiniPure Goat Anti-Rabbit IgG(H+L) with dilution 1:1500.