

## Product name

ERBB3 antibody

## Specificity

Human, Mouse, Rat; other species not tested.

## Antibody description

ERBB3 Rabbit Polyclonal antibody. Positive IHC detected in human breast cancer tissue, human prostate cancer tissue. Observed molecular weight by Western-blot: 185kd

## Preparation

This antibody was obtained by immunization of ERBB3 recombinant protein (Accession Number: BC002706). Purification method: Antigen affinity purified.

## Formulation

PBS with 0.1% sodium azide and 50% glycerol pH 7.3.

## Storage

Store at -20°C. DO NOT ALIQUOT

## Clonality

Polyclonal

## Ig Type

Rabbit IgG

## Applications

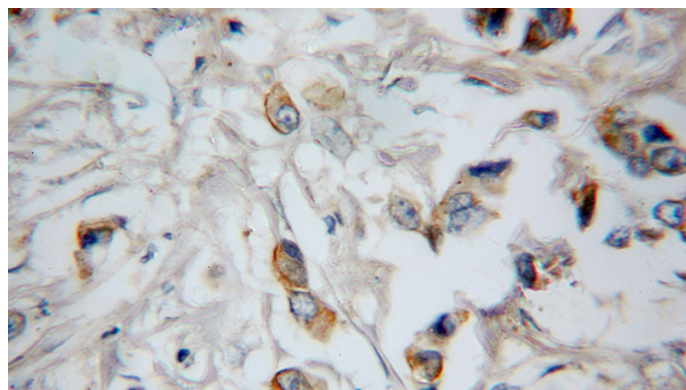
ELISA, IHC

## Dilutions

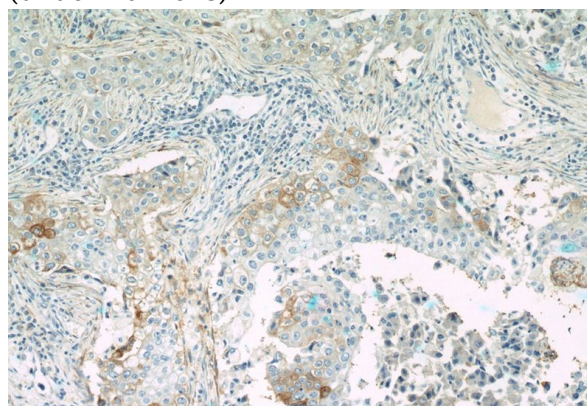
Recommended Dilution:

IHC: 1:20-1:200

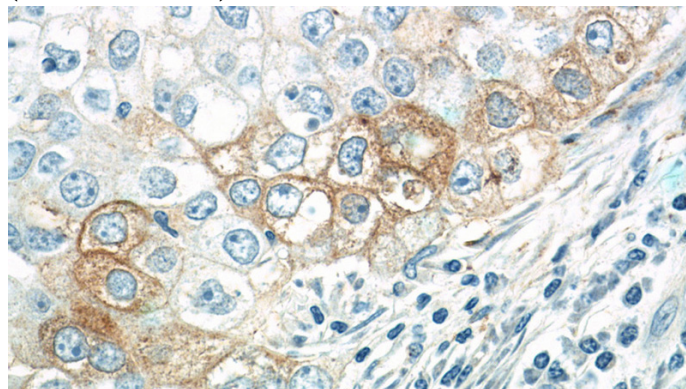
## Validations



Immunohistochemical of paraffin-embedded human prostate cancer using Catalog No:110402(ERBB3 antibody) at dilution of 1:10 (under 40x lens)



Immunohistochemistry of paraffin-embedded human breast cancer tissue slide using Catalog No:110402(ERBB3 Antibody) at dilution of 1:200 (under 10x lens)



Immunohistochemistry of paraffin-embedded human breast cancer tissue slide using Catalog No:110402(ERBB3 Antibody) at dilution of 1:200 (under 40x lens)