

# ERO1LB antibody



Catalog Number: 110371

## Product name

ERO1LB antibody

## Specificity

Human, Mouse, Rat; other species not tested.

## Antibody description

ERO1LB Rabbit Polyclonal antibody. Positive WB detected in HeLa cells, human placenta tissue. Positive IHC detected in human pancreas cancer tissue, human oesophagus tissue, human small intestine tissue. Observed molecular weight by Western-blot: 40~50kd

## Preparation

This antibody was obtained by immunization of ERO1LB recombinant protein (Accession Number: NM\_019891). Purification method: Antigen affinity purified.

## Formulation

PBS with 0.1% sodium azide and 50% glycerol pH 7.3.

## Storage

Store at -20°C. DO NOT ALIQUOT

## Clonality

Polyclonal

## Ig Type

Rabbit IgG

## Applications

ELISA, WB, IHC

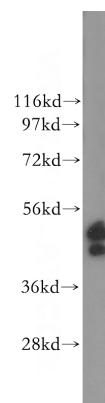
## Dilutions

Recommended Dilution:

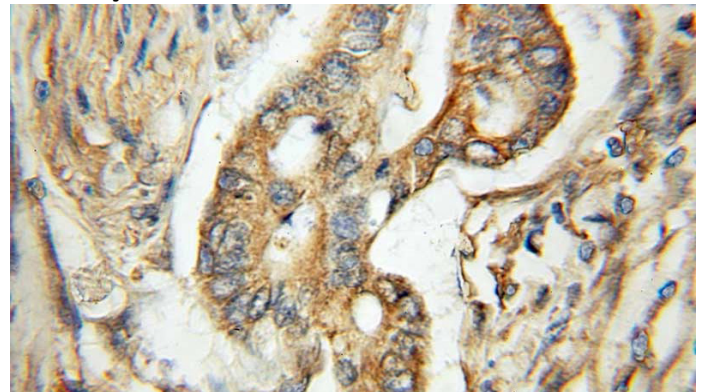
WB: 1:500-1:5000

IHC: 1:20-1:200

## Validations



HeLa cells were subjected to SDS PAGE followed by western blot with Catalog No:110371(ERO1LB antibody) at dilution of 1:500



Immunohistochemical of paraffin-embedded human pancreas cancer using Catalog No:110371(ERO1LB antibody) at dilution of 1:50 (under 40x lens)