

# ENTPD8 antibody



Catalog Number: 110337

## Product name

ENTPD8 antibody

## Specificity

human; other species not tested.

## Antibody description

ENTPD8 Rabbit Polyclonal antibody. Positive WB detected in HepG2 cells. Observed molecular weight by Western-blot: 75kd,54kd

## Preparation

This antibody was obtained by immunization of ENTPD8 recombinant protein (Accession Number: NM\_198585). Purification method: Antigen affinity purified.

## Formulation

PBS with 0.02% sodium azide and 50% glycerol pH 7.3.

## Storage

Store at -20°C. DO NOT ALIQUOT

## Clonality

Polyclonal

## Ig Type

Rabbit IgG

## Applications

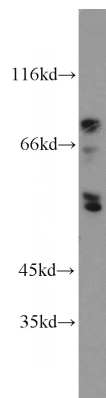
ELISA, WB

## Dilutions

Recommended Dilution:

WB: 1:500-1:5000

## Validations



HepG2 cells were subjected to SDS PAGE followed by western blot with Catalog No:110337(ENTPD8 antibody) at dilution of 1:1000