

EEPD1 antibody



Catalog Number: 110318

Product name

EEPD1 antibody

Specificity

Human, Mouse; other species not tested.

Antibody description

EEPD1 Rabbit Polyclonal antibody. Positive WB detected in COLO 320 cells, mouse stomach tissue. Observed molecular weight by Western-blot: 63 kDa

Preparation

This antibody was obtained by immunization of EEPD1 recombinant protein (Accession Number: NM_030636). Purification method: Antigen affinity purified.

Formulation

PBS with 0.1% sodium azide and 50% glycerol pH 7.3.

Storage

Store at -20°C. DO NOT ALIQUOT

Clonality

Polyclonal

Ig Type

Rabbit IgG

Applications

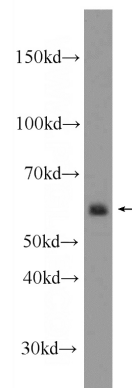
ELISA, WB

Dilutions

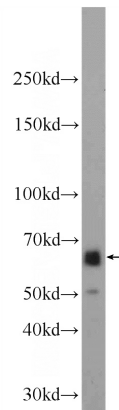
Recommended Dilution:

WB: 1:200-1:2000

Validations



COLO 320 cells were subjected to SDS PAGE followed by western blot with Catalog No:110318(EEPD1 Antibody) at dilution of 1:600



mouse stomach tissue were subjected to SDS PAGE followed by western blot with Catalog No:110318(EEPD1 Antibody) at dilution of 1:600