

# EEF1B2 antibody



Catalog Number: 110313

## Product name

EEF1B2 antibody

## Specificity

Human, Mouse, Rat; other species not tested.

## Antibody description

EEF1B2 Rabbit Polyclonal antibody. Positive WB detected in SKOV-3 cells, HEK-293 cells, HeLa cells, Jurkat cells, PC-3 cells, RAW264.7 cells. Positive IP detected in Jurkat cells. Positive IF detected in MCF-7 cells. Positive IHC detected in human pancreas cancer tissue. Observed molecular weight by Western-blot: 24-30 kDa, 34 kDa

## Preparation

This antibody was obtained by immunization of EEF1B2 recombinant protein (Accession Number: NM\_021121). Purification method: Antigen affinity purified.

## Formulation

PBS with 0.1% sodium azide and 50% glycerol pH 7.3.

## Storage

Store at -20°C. DO NOT ALIQUOT

## Clonality

Polyclonal

## Ig Type

Rabbit IgG

## Applications

ELISA, WB, IHC, IF, IP

## Dilutions

Recommended Dilution:

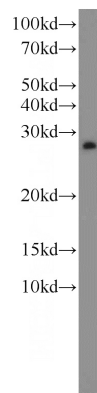
WB: 1:500-1:5000

IP: 1:200-1:2000

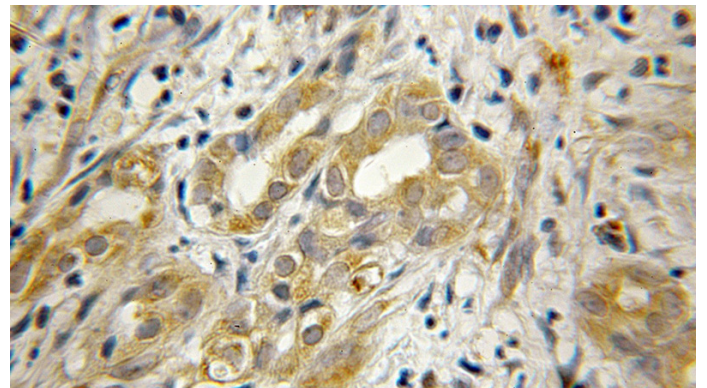
IHC: 1:20-1:200

IF: 1:10-1:100

## Validations



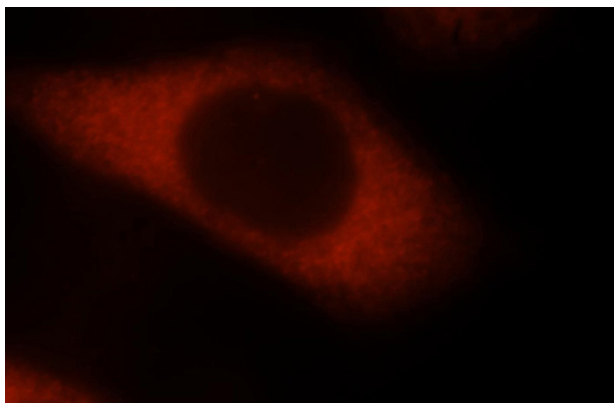
SKOV-3 cells were subjected to SDS PAGE followed by western blot with Catalog No:110313(EEF1B2 antibody) at dilution of 1:1000



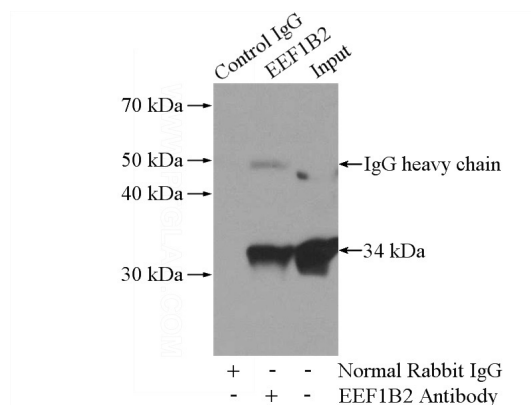
Immunohistochemical of paraffin-embedded human pancreas cancer using Catalog No:110313(EEF1B2 antibody) at dilution of 1:50 (under 10x lens)

# EEF1B2 antibody

Catalog Number: 110313



Immunofluorescent analysis of MCF-7 cells, using Catalog No:110313 and Rhodamine-labeled goat anti-rabbit IgG (red).



IP Result of anti-EEF1B2 (IP:Catalog No:110313, 4ug; Detection:Catalog No:110313 1:500) with Jurkat cells lysate 2400ug.