

# EDA antibody

Catalog Number: 110297

## Product name

EDA antibody

## Specificity

Human, Mouse; other species not tested.

## Antibody description

EDA Rabbit Polyclonal antibody. Positive WB detected in mouse liver tissue. Positive IHC detected in human heart tissue, human skin tissue. Observed molecular weight by Western-blot: 40 kDa

## Preparation

This antibody was obtained by immunization of EDA recombinant protein (Accession Number: NM\_001399). Purification method: Antigen affinity purified.

## Formulation

PBS with 0.1% sodium azide and 50% glycerol pH 7.3.

## Storage

Store at -20°C. DO NOT ALIQUOT

## Clonality

Polyclonal

## Ig Type

Rabbit IgG

## Applications

ELISA, IHC, WB

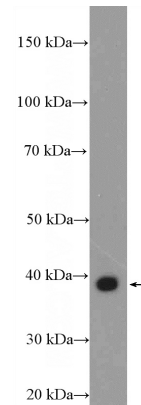
## Dilutions

Recommended Dilution:

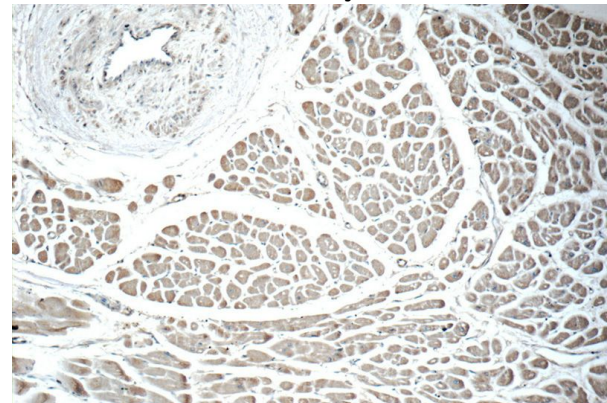
WB: 1:200-1:1000

IHC: 1:20-1:200

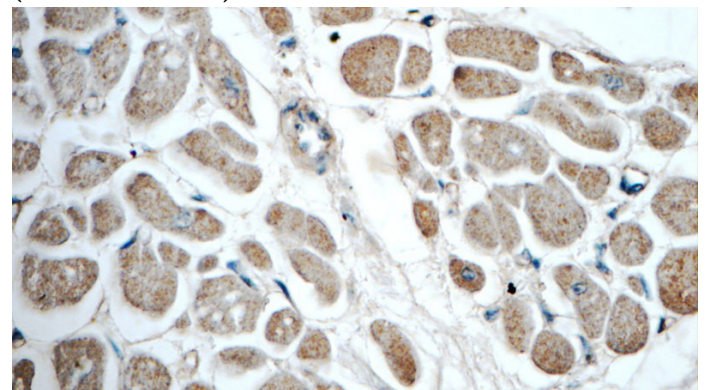
## Validations



mouse liver tissue were subjected to SDS PAGE followed by western blot with Catalog No:110297(EDA Antibody) at dilution of 1:100



Immunohistochemistry of paraffin-embedded human heart tissue slide using Catalog No:110297(EDA Antibody) at dilution of 1:50 (under 10x lens)



Immunohistochemistry of paraffin-embedded human heart tissue slide using Catalog No:110297(EDA Antibody) at dilution of 1:50

# EDA antibody



Catalog Number: 110297

---

(under 40x lens)