

ENO3 antibody

Catalog Number: 110254

Product name

ENO3 antibody

Specificity

Human, Mouse, Rat; other species not tested.

Antibody description

ENO3 Rabbit Polyclonal antibody. Positive WB detected in Jurkat cells, HeLa cells, HepG2 cells, mouse brain tissue, multi-cells/tissue, SH-SY5Y cells. Positive IHC detected in human skeletal muscle tissue, human heart tissue. Observed molecular weight by Western-blot: 42-47kd

Preparation

This antibody was obtained by immunization of Peptide (Accession Number: NM_001976). Purification method: Antigen affinity purified.

Formulation

PBS with 0.02% sodium azide and 50% glycerol pH 7.3.

Storage

Store at -20°C. DO NOT ALIQUOT

Clonality

Polyclonal

Ig Type

Rabbit IgG

Applications

ELISA, WB, IHC

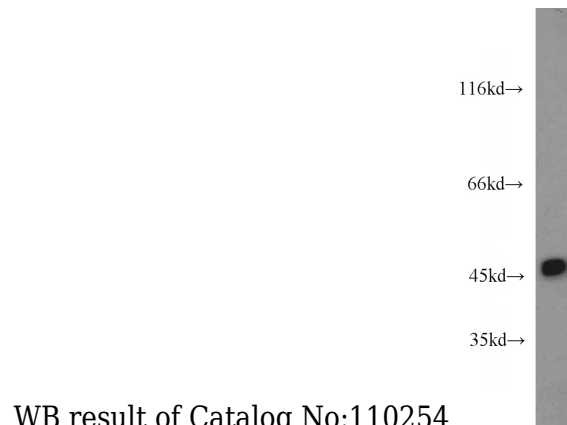
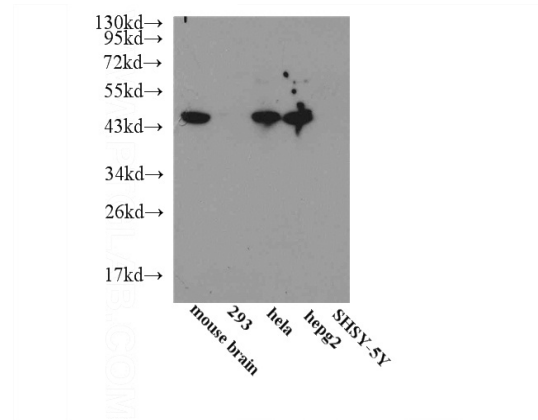
Dilutions

Recommended Dilution:

WB: 1:1000-1:10000

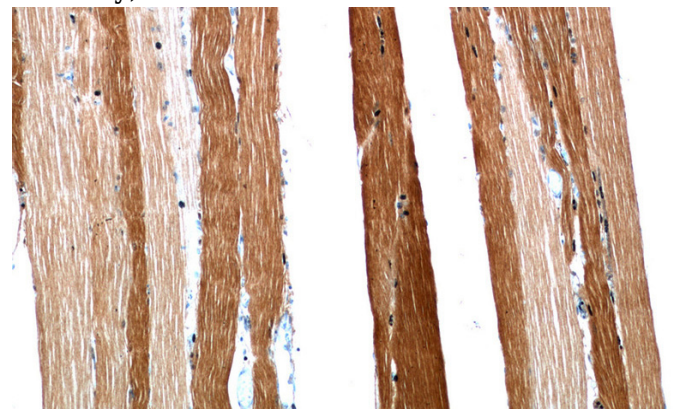
IHC: 1:20-1:200

Validations



WB result of Catalog No:110254

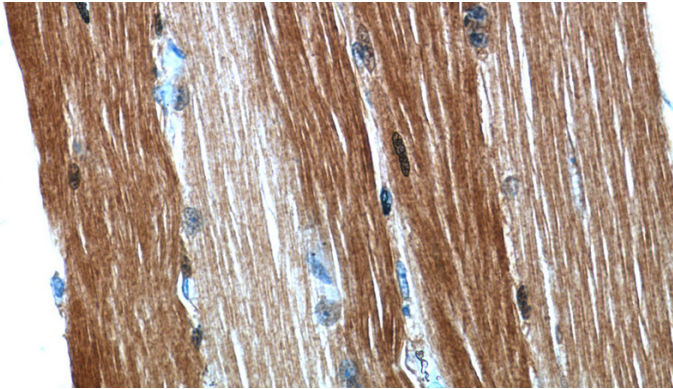
Jurkat cells were subjected to SDS PAGE followed by western blot with Catalog No:110254(ENO3 antibody) at dilution of 1:2000



Immunohistochemical of paraffin-embedded human skeletal muscle using Catalog No:110254(ENO3 antibody) at dilution of 1:50 (under 10x lens)

ENO3 antibody

Catalog Number: 110254



Immunohistochemical of paraffin-embedded human skeletal muscle using Catalog No:110254(ENO3 antibody) at dilution of 1:50 (under 40x lens)