

# EMILIN1 antibody

Catalog Number: 110239

## Product name

EMILIN1 antibody

## Specificity

human; other species not tested.

## Antibody description

EMILIN1 Rabbit Polyclonal antibody. Positive IHC detected in human ovary tumor. Positive WB detected in human kidney tissue, human brain tissue, human placenta tissue. Observed molecular weight by Western-blot: 120kd

## Preparation

This antibody was obtained by immunization of EMILIN1 recombinant protein (Accession Number: BC007530). Purification method: Antigen affinity purified.

## Formulation

PBS with 0.1% sodium azide and 50% glycerol pH 7.3.

## Storage

Store at -20°C. DO NOT ALIQUOT

## Clonality

Polyclonal

## Ig Type

Rabbit IgG

## Applications

ELISA, WB, IHC

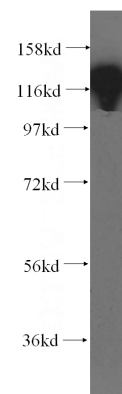
## Dilutions

Recommended Dilution:

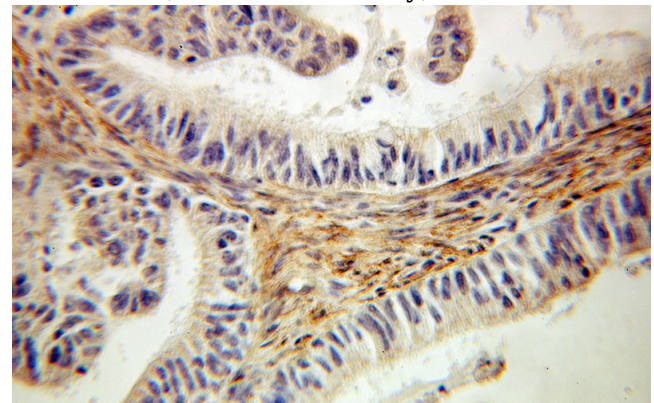
WB: 1:500-1:5000

IHC: 1:20-1:200

## Validations



human kidney tissue were subjected to SDS PAGE followed by western blot with Catalog No:110239(EMILIN1 antibody) at dilution of 1:300



Immunohistochemical of paraffin-embedded human ovary tumor using Catalog No:110239(EMILIN1 antibody) at dilution of 1:100 (under 10x lens)