

EMAP II antibody

Catalog Number: 110234

Product name

EMAP II antibody

IHC: 1:20-1:200

IF: 1:10-1:100

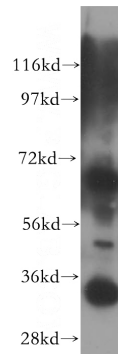
Specificity

Human, Mouse, Rat; other species not tested.

Validations

Antibody description

EMAP II Rabbit Polyclonal antibody. Positive IHC detected in human cervical cancer tissue. Positive IF detected in Hela cells. Positive WB detected in SGC-7901 cells, mouse pancreas tissue. Observed molecular weight by Western-blot: 34kd and 68kd



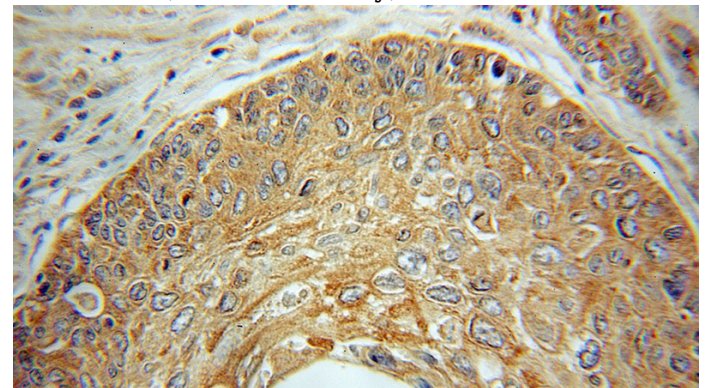
Preparation

This antibody was obtained by immunization of EMAP II recombinant protein (Accession Number: XM_017008836). Purification method: Antigen affinity purified.

SGC-7901 cells were subjected to SDS PAGE followed by western blot with Catalog No:110234(SCYE1 antibody) at dilution of 1:500

Formulation

PBS with 0.1% sodium azide and 50% glycerol pH 7.3.



Storage

Store at -20°C. DO NOT ALIQUOT

Clonality

Polyclonal

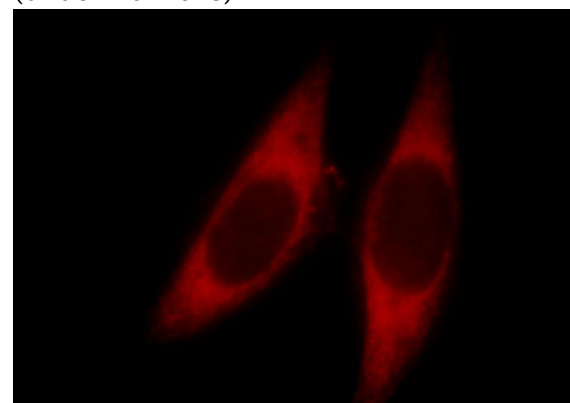
Immunohistochemical of paraffin-embedded human cervical cancer using Catalog No:110234(SCYE1 antibody) at dilution of 1:100 (under 10x lens)

Ig Type

Rabbit IgG

Applications

ELISA, WB, IHC, IF



Dilutions

Recommended Dilution:

WB: 1:1000-1:10000

Immunofluorescent analysis of Hela cells, using

EMAP II antibody



Catalog Number: 110234

SCYE1 antibody Catalog No:110234 at 1:25

dilution and Rhodamine-labeled goat anti-rabbit
IgG (red).