

# EI24 antibody

Catalog Number: 110229

---

## Product name

EI24 antibody

## Specificity

Human, Mouse, Rat; other species not tested.

## Antibody description

EI24 Rabbit Polyclonal antibody. Positive WB detected in HeLa cells, HT-1080 cells, L02 cells. Observed molecular weight by Western-blot: 40-45kd

## Preparation

This antibody was obtained by immunization of EI24 recombinant protein (Accession Number: XM\_011543069). Purification method: Antigen affinity purified.

## Formulation

PBS with 0.02% sodium azide and 50% glycerol pH 7.3.

## Storage

Store at -20°C. DO NOT ALIQUOT

## Clonality

Polyclonal

## Ig Type

Rabbit IgG

## Applications

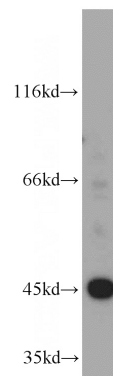
ELISA, WB

## Dilutions

Recommended Dilution:

WB: 1:1000-1:10000

## Validations



HeLa cells were subjected to SDS PAGE followed by western blot with Catalog No:110229(EI24 antibody) at dilution of 1:600