

# EGFR (N-terminal) antibody



Catalog Number: 110217

## Product name

EGFR (N-terminal) antibody

## Specificity

Human; other species not tested.

## Antibody description

EGFR (N-terminal) Rabbit Polyclonal antibody. Positive IHC detected in human breast cancer tissue, human lung cancer tissue. Positive FC detected in HepG2 cells. Positive WB detected in A431 cells. Observed molecular weight by Western-blot: 145 kDa

## Preparation

This antibody was obtained by immunization of EGFR (N-terminal) recombinant protein (Accession Number: NM\_001346897). Purification method: Antigen Affinity purified.

## Formulation

PBS with 0.02% sodium azide and 50% glycerol pH 7.3.

## Storage

Store at -20°C. DO NOT ALIQUOT

## Clonality

Polyclonal

## Ig Type

Rabbit IgG

## Applications

ELISA, WB, IHC, FC

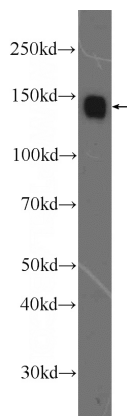
## Dilutions

Recommended Dilution:

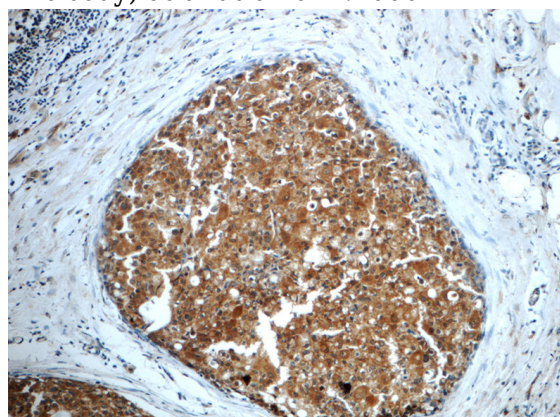
WB: 1:1000-1:10000

IHC: 1:20-1:200

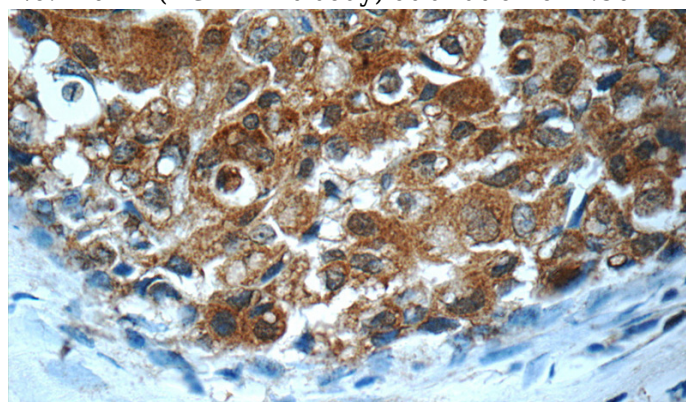
## Validations



A431 cells were subjected to SDS PAGE followed by western blot with Catalog No:110217(EGFR Antibody) at dilution of 1:2000



Immunohistochemistry of paraffin-embedded human breast cancer slide using Catalog No:110217(EGFR Antibody) at dilution of 1:50

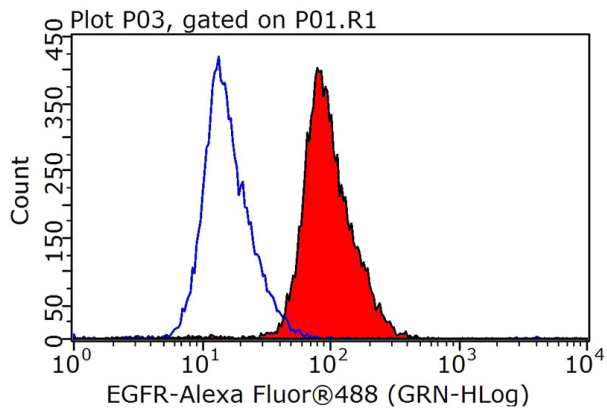


Immunohistochemistry of paraffin-embedded human breast cancer slide using Catalog No:110217(EGFR Antibody) at dilution of 1:50

# EGFR (N-terminal) antibody



Catalog Number: 110217



1X10<sup>6</sup> HepG2 cells were stained with 0.2ug EGFR antibody (Catalog No:110217, red) and control antibody (blue). Fixed with 90% MeOH blocked with 3% BSA (30 min). Alexa Fluor 488-conjugated AffiniPure Goat Anti-Rabbit IgG(H+L) with dilution 1:1000.