

EFS antibody

Catalog Number: 110211

Product name

EFS antibody

IP: 1:200-1:1000

IF: 1:10-1:100

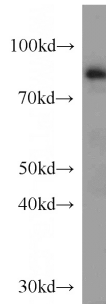
Specificity

Human, Mouse, Rat; other species not tested.

Validations

Antibody description

EFS Rabbit Polyclonal antibody. Positive IP detected in mouse thymus tissue. Positive WB detected in mouse thymus tissue, human placenta tissue. Positive IF detected in HepG2 cells. Observed molecular weight by Western-blot: 80-90 kDa



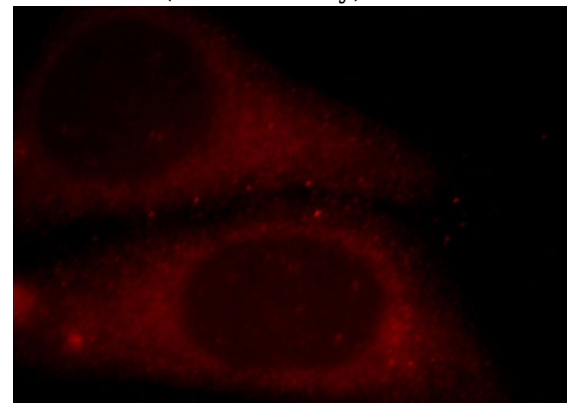
Preparation

This antibody was obtained by immunization of EFS recombinant protein (Accession Number: NM_032459). Purification method: Antigen affinity purified.

mouse thymus tissue were subjected to SDS PAGE followed by western blot with Catalog No:110211(EFS antibody) at dilution of 1:300

Formulation

PBS with 0.02% sodium azide and 50% glycerol pH 7.3.



Storage

Store at -20°C. DO NOT ALIQUOT

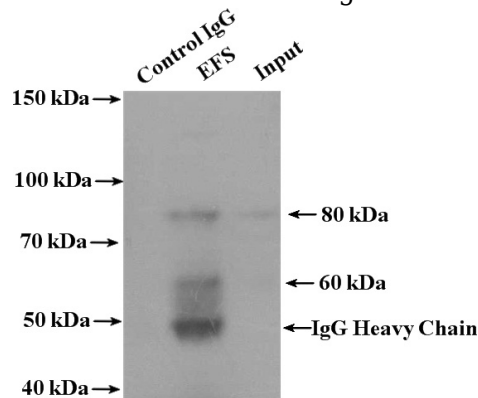
Clonality

Polyclonal

Immunofluorescent analysis of HepG2 cells, using EFS antibody Catalog No:110211 at 1:25 dilution and Rhodamine-labeled goat anti-rabbit IgG (red).

Ig Type

Rabbit IgG



Applications

ELISA, WB, IF, IP

Dilutions

Recommended Dilution:

WB: 1:500-1:5000

IP Result of anti-EFS (IP:Catalog No:110211, 4ug; Detection:Catalog No:110211 1:300) with mouse

EFS antibody



Catalog Number: 110211

thymus tissue lysate 3200ug.