

# EIF3I antibody

Catalog Number: 110197

## Product name

EIF3I antibody

## Specificity

Human, Mouse, Rat; other species not tested.

## Antibody description

EIF3I Rabbit Polyclonal antibody. Positive WB detected in HEK-293 cells, HeLa cells, HepG2 cells, human placenta tissue, Jurkat cells, K-562 cells, MCF7 cells, mouse brain tissue, NIH/3T3 cells, SH-SY5Y cells. Positive IP detected in HEK-293 cells. Positive FC detected in HeLa cells. Positive IF detected in HeLa cells. Positive IHC detected in human breast cancer tissue, human liver tissue, human testis tissue. Observed molecular weight by Western-blot: 36kd

## Preparation

This antibody was obtained by immunization of EIF3I recombinant protein (Accession Number: NM\_003757). Purification method: Antigen affinity purified.

## Formulation

PBS with 0.1% sodium azide and 50% glycerol pH 7.3.

## Storage

Store at -20°C. DO NOT ALIQUOT

## Clonality

Polyclonal

## Ig Type

Rabbit IgG

## Applications

ELISA, IHC, IF, IP, WB, FC

## Dilutions

Recommended Dilution:

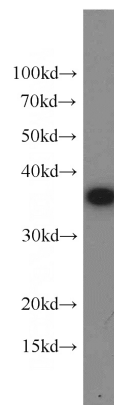
WB: 1:500-1:5000

IP: 1:500-1:5000

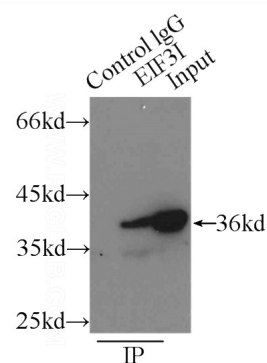
IHC: 1:20-1:200

IF: 1:10-1:100

## Validations



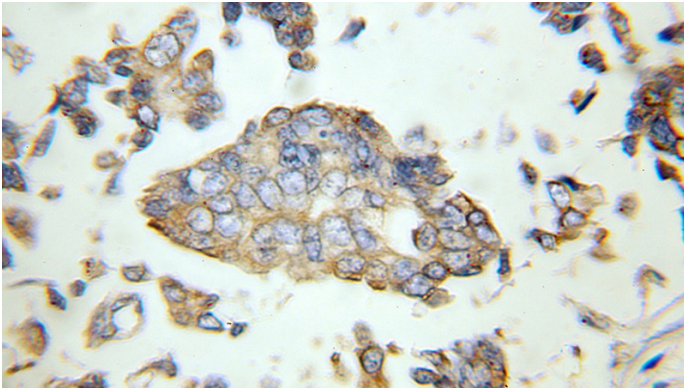
HEK-293 cells were subjected to SDS PAGE followed by western blot with Catalog No:110197(EIF3I antibody) at dilution of 1:1000



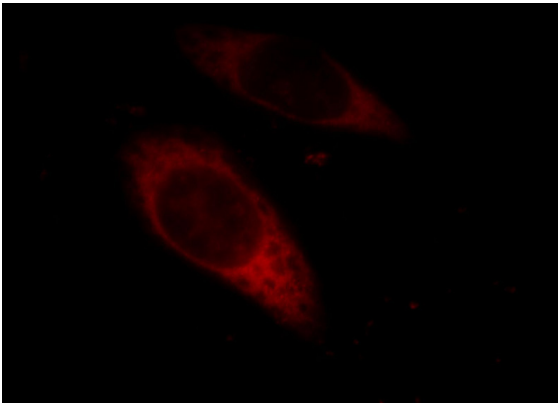
IP Result of anti-EIF3I (IP:Catalog No:110197, 3ug; Detection:Catalog No:110197 1:1000) with HEK-293 cells lysate 1500ug.

# EIF3I antibody

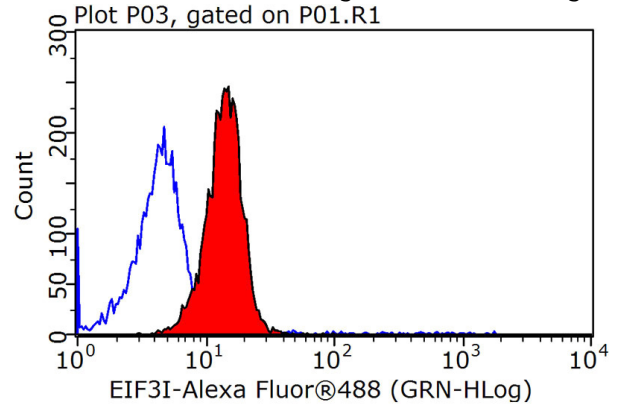
Catalog Number: 110197



Immunohistochemical of paraffin-embedded human breast cancer using Catalog No:110197(EIF3I antibody) at dilution of 1:100 (under 10x lens)



Immunofluorescent analysis of HeLa cells, using EIF3I antibody Catalog No:110197 at 1:25 dilution and Rhodamine-labeled goat anti-rabbit IgG (red).



1X10<sup>6</sup> HeLa cells were stained with 0.2ug EIF3I antibody (Catalog No:110197, red) and control antibody (blue). Fixed with 90% MeOH blocked with 3% BSA (30 min). Alexa Fluor 488-conjugated AffiniPure Goat Anti-Rabbit IgG(H+L) with dilution 1:1000.