

# DUS1L antibody



Catalog Number: 110111

## Product name

DUS1L antibody

## Specificity

human, mouse, rat; other species not tested.

## Antibody description

DUS1L Rabbit Polyclonal antibody. Positive WB detected in Jurkat cells. Observed molecular weight by Western-blot: 53kd

## Preparation

This antibody was obtained by immunization of DUS1L recombinant protein (Accession Number: BC017081). Purification method: Antigen affinity purified.

## Formulation

PBS with 0.02% sodium azide and 50% glycerol pH 7.3.

## Storage

Store at -20°C. DO NOT ALIQUOT

## Clonality

Polyclonal

## Ig Type

Rabbit IgG

## Applications

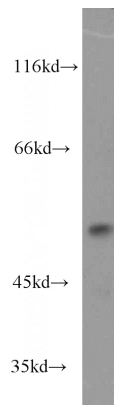
ELISA, WB

## Dilutions

Recommended Dilution:

WB: 1:500-1:5000

## Validations



Jurkat cells were subjected to SDS PAGE followed by western blot with Catalog No:110111(DUS1L antibody) at dilution of 1:1500