

Dopamine beta Hydroxylase antibody



Catalog Number: 110060

Product name

Dopamine beta Hydroxylase antibody

IHC: 1:50-1:500

IF: 1:10-1:100

Specificity

Human; other species not tested.

Antibody description

Dopamine beta Hydroxylase Rabbit Polyclonal antibody. Positive WB detected in HepG2 cells, HeLa cells, SH-SY5Y cells. Positive IHC detected in human liver cancer tissue. Positive IF detected in HepG2 cells, HeLa cells. Observed molecular weight by Western-blot: 63 kDa

Preparation

This antibody was obtained by immunization of Dopamine beta Hydroxylase recombinant protein (Accession Number: BC017174). Purification method: Antigen affinity purified.

Formulation

PBS with 0.1% sodium azide and 50% glycerol pH 7.3.

Storage

Store at -20°C. DO NOT ALIQUOT

Clonality

Polyclonal

Ig Type

Rabbit IgG

Applications

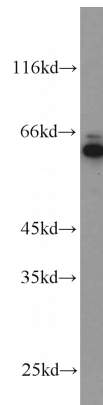
ELISA, WB, IF, IHC

Dilutions

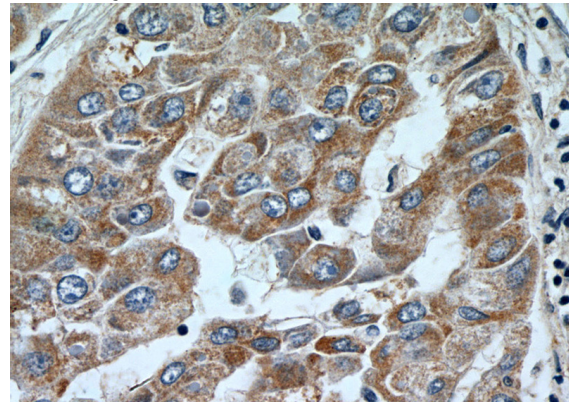
Recommended Dilution:

WB: 1:500-1:5000

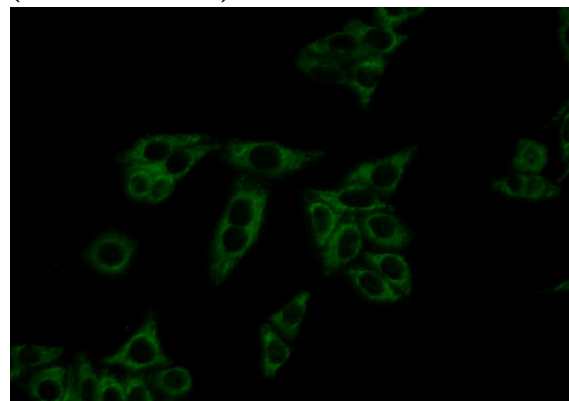
Validations



HepG2 cells were subjected to SDS PAGE followed by western blot with Catalog No:110060(DBH antibody) at dilution of 1:1000



Immunohistochemistry of paraffin-embedded human liver cancer tissue slide using Catalog No:110060(DBH Antibody) at dilution of 1:100 (under 40x lens).



Immunofluorescent analysis of HepG2 cells using

Dopamine beta Hydroxylase antibody



Catalog Number: 110060

Catalog No:110060(DBH Antibody) at dilution of 1:25 and Alexa Fluor 488-conjugated AffiniPure Goat Anti-Rabbit IgG(H+L)