

domain-I-of-FIZ-1 antibody



Catalog Number: 110058

Product name

domain-I-of-FIZ-1 antibody

IHC: 1:20-1:200

IF: 1:10-1:100

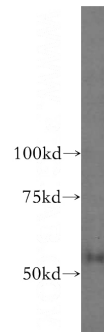
Specificity

Human, Mouse, Rat; other species not tested.

Validations

Antibody description

domain-I-of-FIZ-1 Rabbit Polyclonal antibody. Positive WB detected in human kidney tissue, Y79 cells. Positive IHC detected in human kidney tissue, human skeletal muscle tissue. Positive IF detected in HepG2 cells. Observed molecular weight by Western-blot: 60 kDa



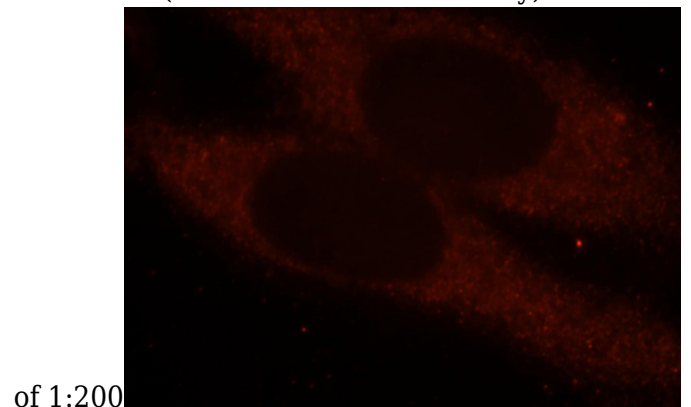
Preparation

This antibody was obtained by immunization of Peptide (Accession Number: NM_032836). Purification method: Antigen affinity purified.

human kidney tissue were subjected to SDS PAGE followed by western blot with Catalog No:110058(domain-I-of-FIZ-1 antibody) at dilution

Formulation

PBS with 0.02% sodium azide and 50% glycerol pH 7.3.



Storage

Store at -20°C. DO NOT ALIQUOT

Clonality

Polyclonal

Ig Type

Rabbit IgG

Applications

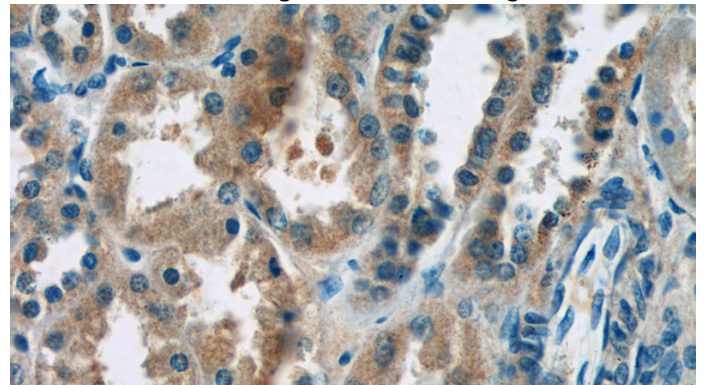
ELISA, WB, IF, IHC

Dilutions

Recommended Dilution:

WB: 1:200-1:2000

of 1:200
Immunofluorescent analysis of HepG2 cells, using FIZ1 antibody Catalog No: at 1:25 dilution and Rhodamine-labeled goat anti-rabbit IgG (red).



Immunohistochemistry of paraffin-embedded human kidney tissue slide using Catalog

domain-I-of-FIZ-1 antibody



Catalog Number: 110058

No:110058(domain-I-of-FIZ-1 Antibody) at dilution of 1:50 (under 40x lens)