

# DOCK180-Specific antibody



Catalog Number: 110042

## Product name

DOCK180-Specific antibody

## Specificity

Human, Mouse, Rat; other species not tested.

## Antibody description

DOCK180-Specific Rabbit Polyclonal antibody. Positive IF detected in HeLa cells. Positive WB detected in HeLa cells, human placenta tissue. Observed molecular weight by Western-blot: 180kd

## Preparation

This antibody was obtained by immunization of Peptide (Accession Number: NM\_001380). Purification method: Antigen affinity purified.

## Formulation

PBS with 0.02% sodium azide and 50% glycerol pH 7.3.

## Storage

Store at -20°C. DO NOT ALIQUOT

## Clonality

Polyclonal

## Ig Type

Rabbit IgG

## Applications

ELISA, WB, IF

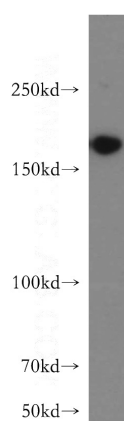
## Dilutions

Recommended Dilution:

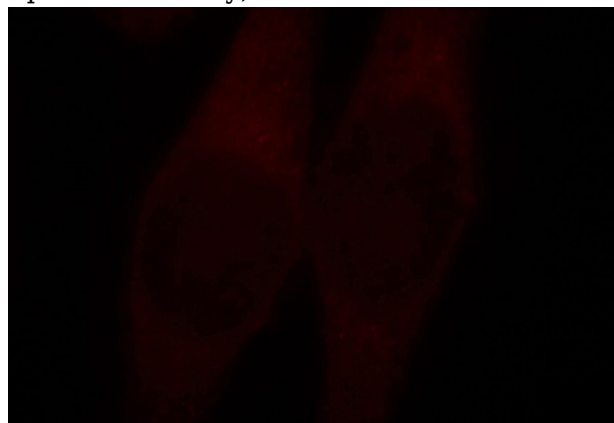
WB: 1:500-1:5000

IF: 1:10-1:100

## Validations



HeLa cells were subjected to SDS PAGE followed by western blot with Catalog No:110042(DocK1-Specific antibody) at dilution of 1:400



Immunofluorescent analysis of HeLa cells, using DocK1 antibody Catalog No:110042 at 1:25 dilution and Rhodamine-labeled goat anti-rabbit IgG (red).