

DRG1 antibody

Catalog Number: 110020

Product name

DRG1 antibody

IP: 1:200-1:2000

IF: 1:10-1:100

Specificity

Human, Rat; other species not tested.

Antibody description

DRG1 Rabbit Polyclonal antibody. Positive IP detected in K-562 cells. Positive WB detected in K-562 cells, HepG2 cells, PC-12 cells. Positive IF detected in HepG2 cells. Observed molecular weight by Western-blot: 41 kDa

Preparation

This antibody was obtained by immunization of DRG1 recombinant protein (Accession Number: NM_004147). Purification method: Antigen affinity purified.

Formulation

PBS with 0.02% sodium azide and 50% glycerol pH 7.3.

Storage

Store at -20°C. DO NOT ALIQUOT

Clonality

Polyclonal

Ig Type

Rabbit IgG

Applications

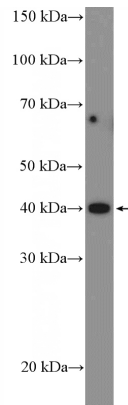
ELISA, IF, IP, WB

Dilutions

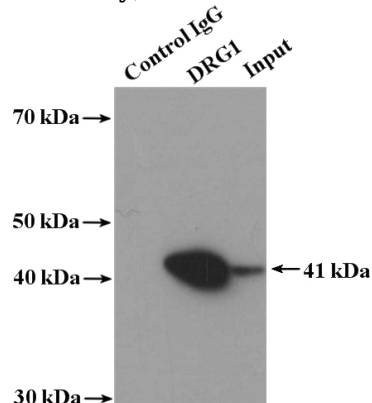
Recommended Dilution:

WB: 1:200-1:2000

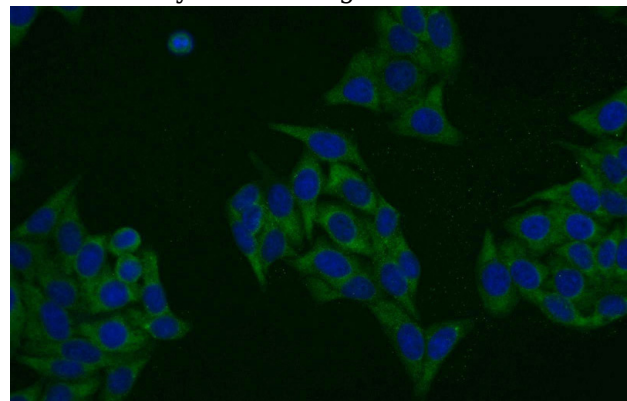
Validations



K-562 cells were subjected to SDS PAGE followed by western blot with Catalog No:110020(DRG1 Antibody) at dilution of 1:600



IP Result of anti-DRG1 (IP:Catalog No:110020, 4ug; Detection:Catalog No:110020 1:600) with K-562 cells lysate 4000ug.



Immunofluorescent analysis of HepG2 cells using Catalog No:110020(DRG1 Antibody) at dilution of

DRG1 antibody



Catalog Number: 110020

1:25 and Alexa Fluor 488-conjugated AffiniPure

Goat Anti-Rabbit IgG(H+L)