

DIXDC1 antibody

Catalog Number: 109980

Product name

DIXDC1 antibody

WB: 1:500-1:5000

IHC: 1:20-1:200

Specificity

Human, Mouse, Rat; other species not tested.

Antibody description

DIXDC1 Rabbit Polyclonal antibody. Positive WB detected in mouse skeletal muscle tissue, mouse heart tissue. Positive IHC detected in human heart tissue, human kidney tissue, human lung tissue, human ovary tissue, human skin tissue, human testis tissue. Observed molecular weight by Western-blot: 70-75 kDa

Preparation

This antibody was obtained by immunization of DIXDC1 recombinant protein (Accession Number: NM_033425). Purification method: Antigen affinity purified.

Formulation

PBS with 0.02% sodium azide and 50% glycerol pH 7.3.

Storage

Store at -20°C. DO NOT ALIQUOT

Clonality

Polyclonal

Ig Type

Rabbit IgG

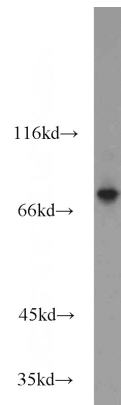
Applications

ELISA, WB, IHC

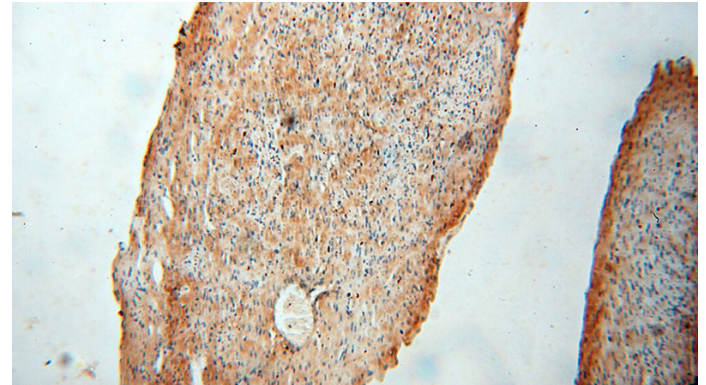
Dilutions

Recommended Dilution:

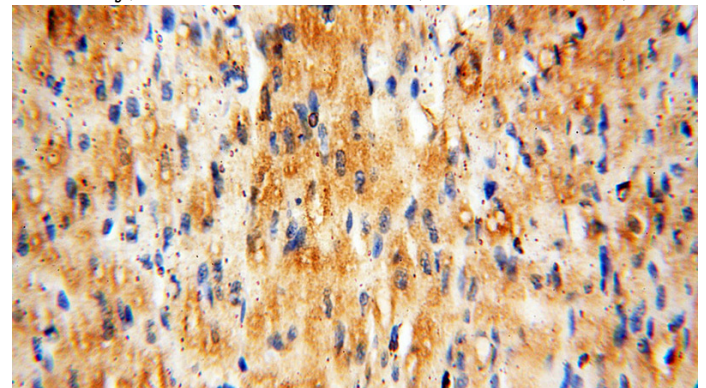
Validations



mouse skeletal muscle tissue were subjected to SDS PAGE followed by western blot with Catalog No:109980(DIXDC1 antibody) at dilution of 1:1500



Immunohistochemical of paraffin-embedded human heart using Catalog No:109980(DIXDC1 antibody) at dilution of 1:100 (under 10x lens)



Immunohistochemical of paraffin-embedded human heart using Catalog No:109980(DIXDC1

DIXDC1 antibody



Catalog Number: 109980

antibody) at dilution of 1:100 (under 40x lens)